



4242 Baldwin Boulevard
 Corpus Christi, Texas
 USA 78405-3399
 Tel: 800-531-3111, 361-888-5591
 Fax: 800-531-3108, 361-888-6510
 www.hortondoors.com
 The Automatic Choice

ARCHITECTURAL DETAILS

REVOLVING DOOR ENTRANCES

Grand® Automatic Series 9620

Type: 2-Wing with Round Drum

F2.18

Apr 13

Standard Packages

Nominal Outside Diameter	Inside Diameter	Entry / Breakout Opening	Slide Door Opening	Rough Opening Width
12'-1 3/16" (3688)	11'-9 3/4" (3600)	5'-10 7/8" (1800)	3'-7 5/16" (1100)	12'-1 3/4" (3670)
14'-0 13/16" (4288)	13'-9 1/4" (4200)	6'-10 11/16" (2100)	4'-7 1/16" (1400)	14'-1 3/8" (4280)
16'-0 7/16" (4888)	15' - 9" (4800)	7'-10 1/2" (2400)	5'-6 15/16" (1700)	16'-1" (4890)

Ceiling Height: 7'-6 9/16" (2300)
Canopy Height: 1'-1 3/8" (340)
Overall Unit Height: 8'-7 15/16" (2640)

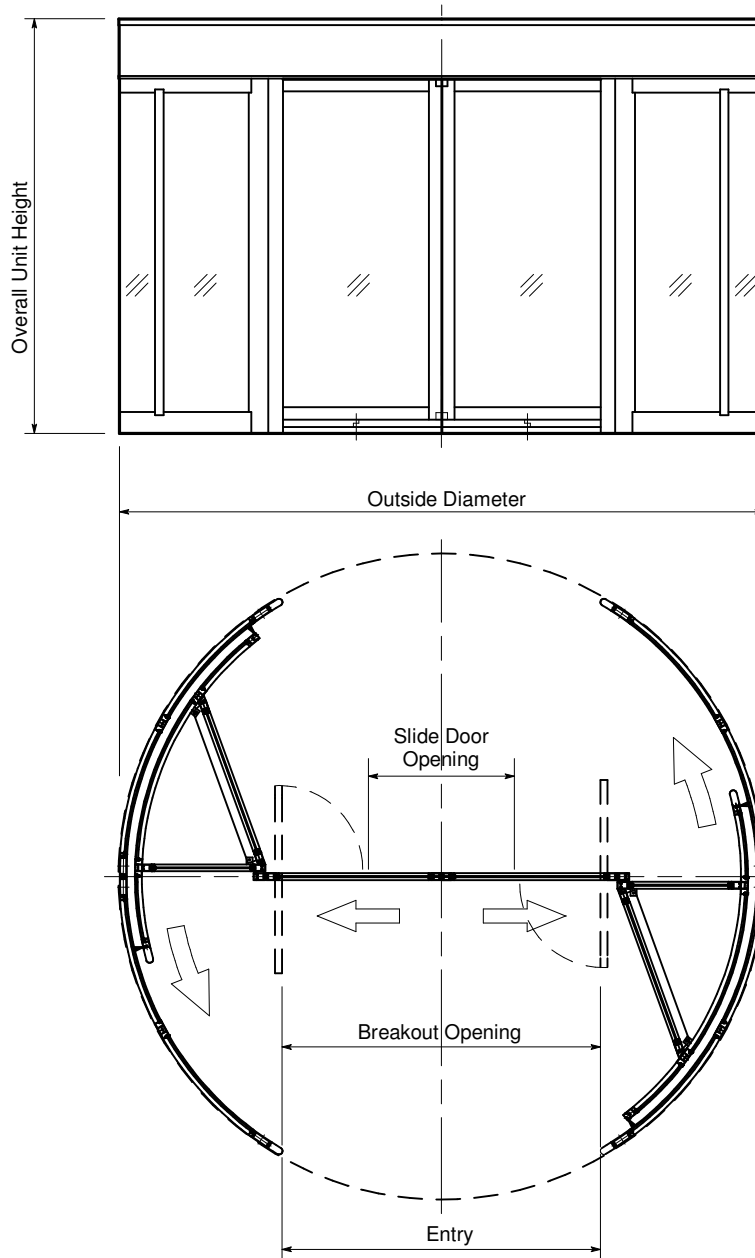
Glazing: Prep for 1/4" glazing in door wings & 5/16" in drum.
Finishes: Anodized or paint finish or stainless steel cladding

Options

- Extended canopy.
- Aluminum roof.

Installation and Operation

- Door unit is surface mounted to finish floor (floor not to exceed 1/4" out of level). Unit is free-standing with no additional support required.
- Drum can be center connected to adjacent construction. Allow 1/4" shim space each side & at canopy. Adjacent construction not to bear down on revolving door.
- Motion sensors at each entry starts wing rotation on user approach at 3-5 RPM. Push plates mounted at each side of entry slow door to 1-3 RPM for slower traffic.
- Electrical: Provide 120 VAC, 15 amp service on a dedicated 20 amp circuit breaker routed to power operator mounted within the enclosure canopy.



Floor Plan and Exterior Elevation

Horton Automatics reserves the right to alter its product and specifications without notice. Dimensions given in U.S. inches followed by millimeters in parenthesis.



® 4242 Baldwin Boulevard
 Corpus Christi, Texas
 USA 78405-3399
 Tel: 800-531-3111, 361-888-5591
 Fax: 800-531-3108, 361-888-6510
 www.hortondoors.com
 The Automatic Choice

ARCHITECTURAL DETAILS

REVOLVING DOORS

ControlFlow® 1-Way Security Series 9130

Type: 3-Wing with Round Drum, Medium Stile

F2.19

July 10

Standard Packages

Nominal Inside Diameter	Outside Diameter	Entry	Overall Unit Height	Rough Opening Width	Rough Opening Height
8'-0" (2438)	8'-3 1/2" (2527)	3'-6 7/8" (1026)	8'-0" (2438)	8'-4" (2540)	8'-0 1/4" (2445)
9'-0" (2743)	9'-3 1/2" (2832)	4'-0 7/8" (1178)	8'-0" (2438)	9'-4" (2845)	8'-0 1/4" (2445)
10'-0" (3048)	10'-3 1/2" (3137)	4'-6 7/8" (1330)	8'-0" (2438)	10'-4" (3150)	8'-0 1/4" (2445)

Ceiling Height: 7'-0" (2134), **Canopy Height:** 12" (305)
Glazing: Standard wing prep'd for 1/4" (6) glass. Glass provided by others.
 Standard drum provided with 7/16" clear laminated curved glass.
Anodized Finish: Clear or Dark Bronze

- Options**
- Ceiling lights.
 - Extended or cropped canopy.
 - Glazing up to 1" in wings
 - Aluminum roof.
 - Custom anodized or paint finish.
 - Ceiling height to 9'-0".

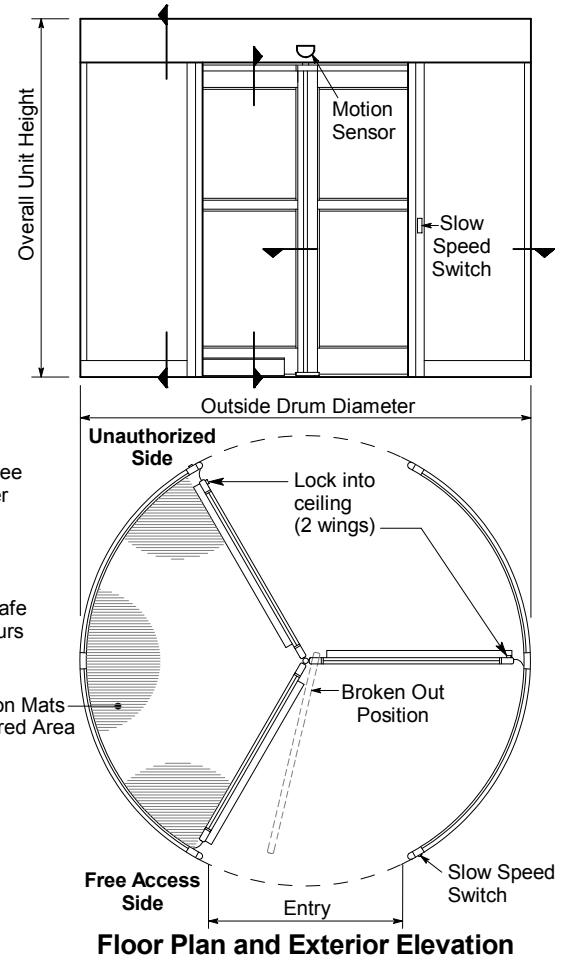
For more standards & options see Architectural Specs (p.F8.0) and Spec Details (p. F3.0).

Installation

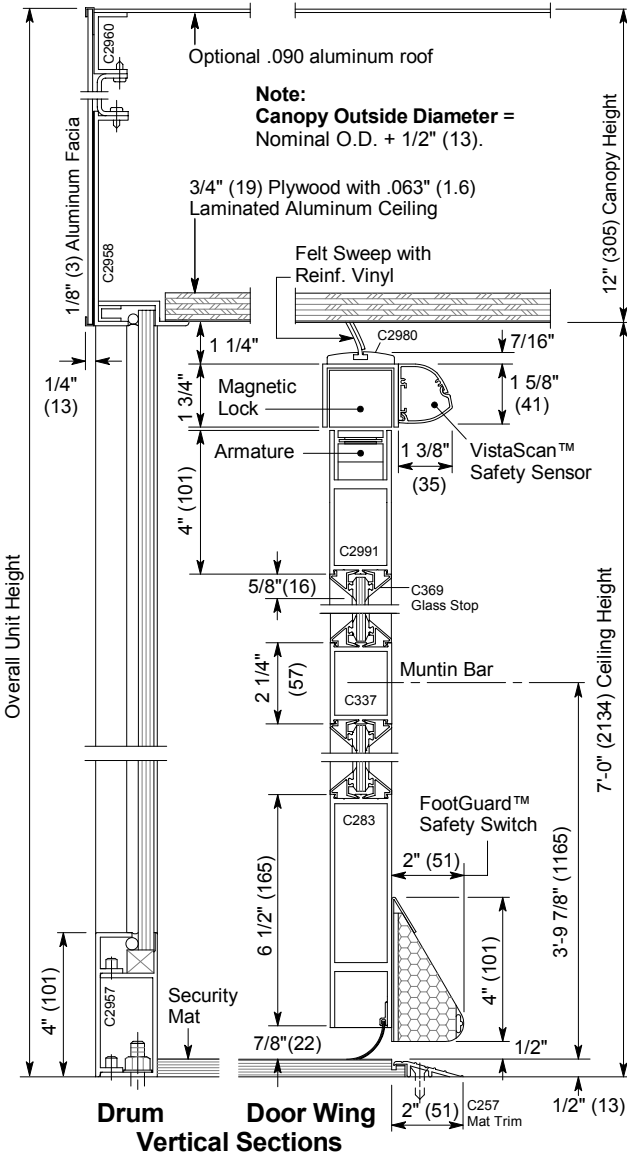
- Door unit is surface mounted to finish floor (floor not to exceed 1/4" out of level). Unit is free-standing with no additional support required.
- Drum can be center connected to adjacent construction or throat connected (at entry vertical rails). Allow 1/4" shim space each side & at canopy. Adjacent construction not to bear down on door unit.
- Electrical: Provide 120 VAC, 15 amp service on a dedicated 20 amp circuit breaker routed to power operator mounted within the enclosure canopy.

Operation

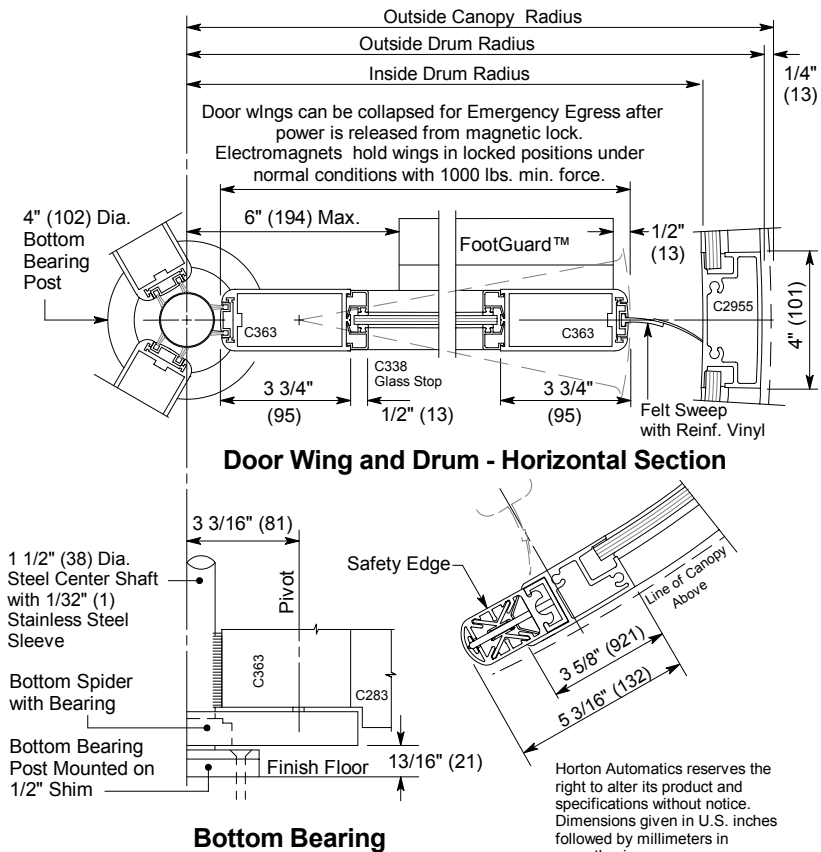
- Traffic is allowed to pass unrestricted from one direction and controlled from opposing direction. Motion sensor at free access side starts wing rotation on user approach at 2-6 RPM. Passage into unauthorized area will cause door to ramp to a stop, lock and announce security violation. Door then rotates to allow secured area to be cleared. Fail-safe design provides full operation for 2 hours in the event of power failure.



Floor Plan and Exterior Elevation



Drum Door Wing Vertical Sections



Door Wing and Drum - Horizontal Section Bottom Bearing

Horton Automatics reserves the right to alter its product and specifications without notice. Dimensions given in U.S. inches followed by millimeters in parenthesis.



® 4242 Baldwin Boulevard
 Corpus Christi, Texas
 USA 78405-3399
 Tel: 800-531-3111, 361-888-5591
 Fax: 800-531-3108, 361-888-6510
 www.hortondoors.com
 The Automatic Choice

ARCHITECTURAL DETAILS

REVOLVING DOORS

ControlFlow® 1-Way Airport Security Series 9131AP

F2.20

Type: 3-Wing with Segmented® Drum, Medium Stile

July 10

Standard Packages

Nominal Outside Diameter	Inside Diameter	Entry	Overall Unit Height	Rough Opening Width	Rough Opening Height
12'-0" (3658)	11'-8 1/2" (3569)	5'-3 3/4" (1619)	8'-0" (2438)	12'-0 1/2" (3670)	8'-0 1/4"

Ceiling Height: 7'-0" (2134), **Canopy Height:** 12" (305)
Glazing: Standard unit prep'd for 1/4" (6) glass. Glass provided by others. **Anodized Finish:** Clear or Dark Bronze

- Options**
- Extended, cropped or round canopy.
 - Prep up to 1" glazing.
 - Custom anodized or paint finish.
 - Aluminum roof.

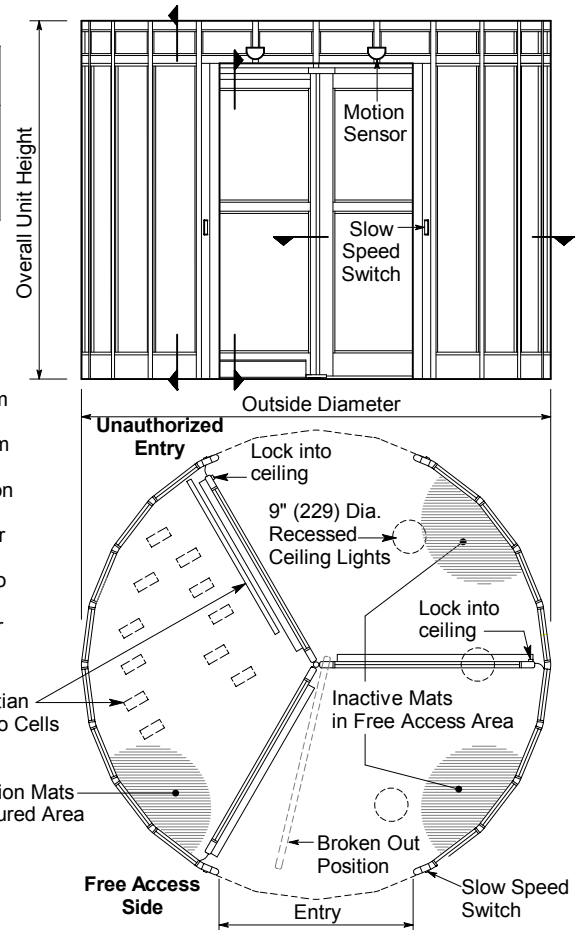
For more standards & options see **Architectural Specs (p.F9.0)** and **Spec Details (p. F3.0)**.

Installation

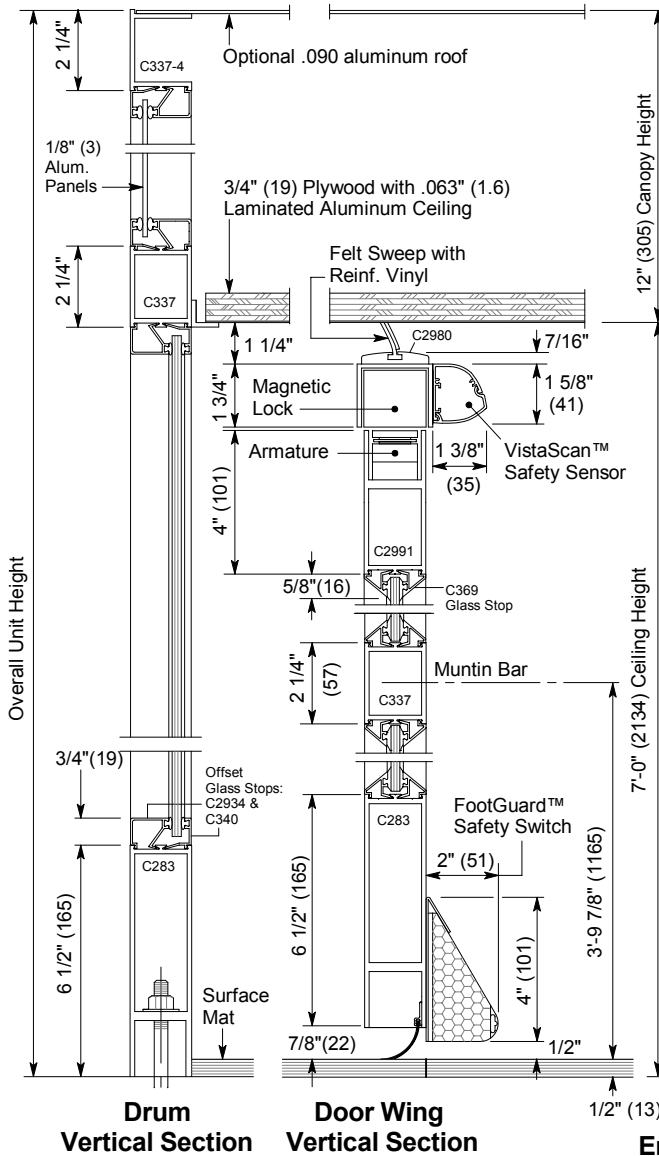
- Door unit is surface mounted to finish floor (floor not to exceed 1/4" out of level). Unit is free-standing with no additional support required.
- Drum can be center connected to adjacent construction or throat connected (at entry vertical rails) (see p. F1.1). Allow 1/4" shim space each side & at canopy. Adjacent construction not to bear down on door unit.
- Electrical: Provide 120 VAC, 15 amp service on a dedicated 20 amp circuit breaker routed to power operator mounted within the enclosure canopy.

Operation

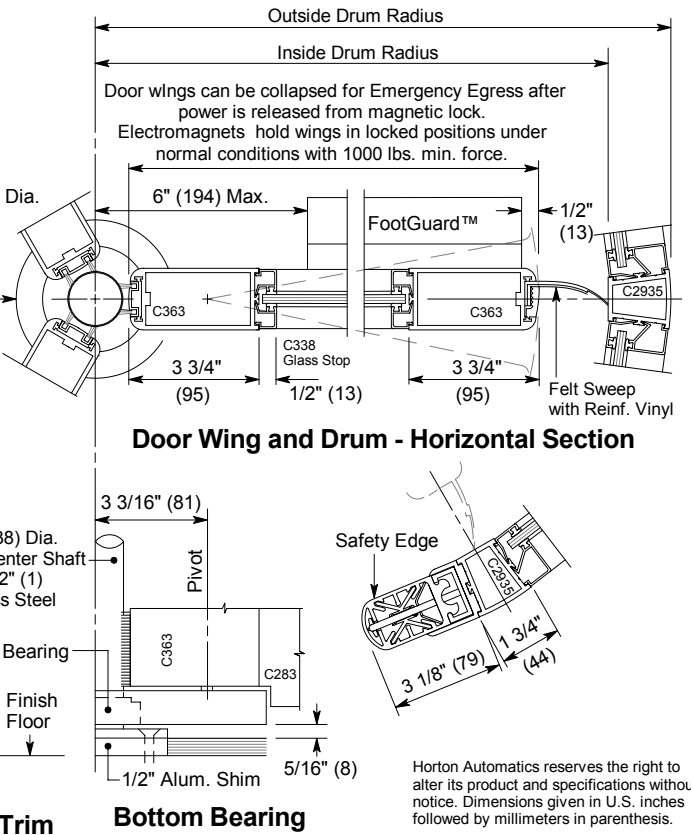
- Traffic is allowed to pass unrestricted from one direction and controlled from opposing direction. **Object Detection System** prevents entry of objects from unauthorized side. Motion sensors at free access side starts wing rotation on user approach at 2-6 RPM. Passage into unauthorized area will cause door to ramp to a stop, lock and announce security violation. Door then rotates to allow secure area to be cleared. Fail-safe design provides full operation for 2 hours in the event of power failure.



Floor Plan and Exterior Elevation



Entry Mat Trim



Bottom Bearing

Horton Automatics reserves the right to alter its product and specifications without notice. Dimensions given in U.S. inches followed by millimeters in parenthesis.



® 4242 Baldwin Boulevard
 Corpus Christi, Texas
 USA 78405-3399
 Tel: 800-531-3111, 361-888-5591
 Fax: 800-531-3108, 361-888-6510
 www.hortondoors.com
 The Automatic Choice

ARCHITECTURAL DETAILS

REVOLVING DOORS

ControlFlow® 1-Way Airport Security Series 9130AP

F2.21

Type: 3-Wing with Round Drum, Medium Stile

July 10

Standard Packages

Nominal Outside Diameter	Inside Diameter	Entry	Overall Unit Height	Rough Opening Width	Rough Opening Height
12'-0" (3658)	11'-8 1/2" (3569)	5'-1 5/8" (1565)	8'-0" (2438)	12'-0 1/2" (3670)	8'-0 1/4"

Canopy Outside Diameter = Nominal O.D. + 1/2" (13).
 Ceiling Height: 7'-0" (2134), Canopy Height: 12" (305)
 Glazing: Standard unit prep'd for 1/4" (6) glass. Glass provided by others.
 Anodized Finish: Clear or Dark Bronze

- Options**
- Extended, cropped or round canopy.
 - Custom anodized or paint finish.
 - Glazing up to 1" in wings.
 - Aluminum roof.

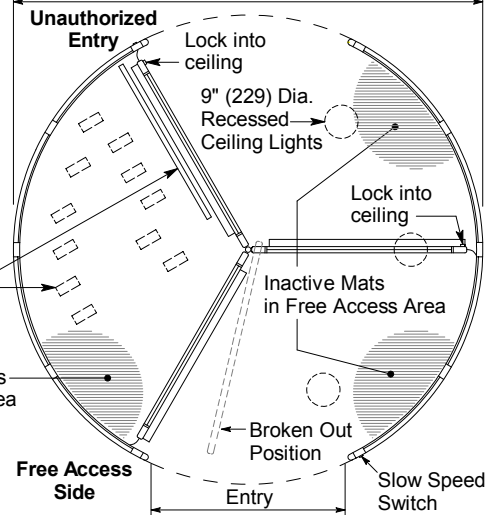
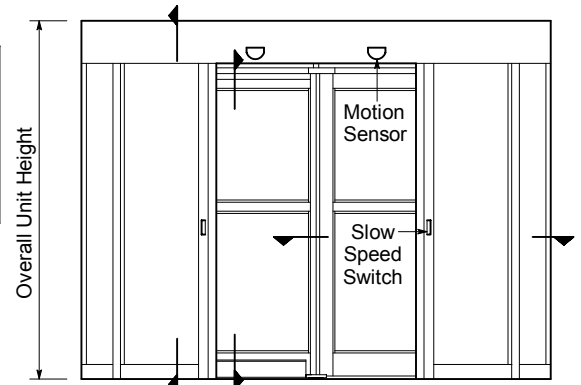
For more standards & options see Architectural Specs (p.F9.0) and Spec Details (p. F3.0).

Installation

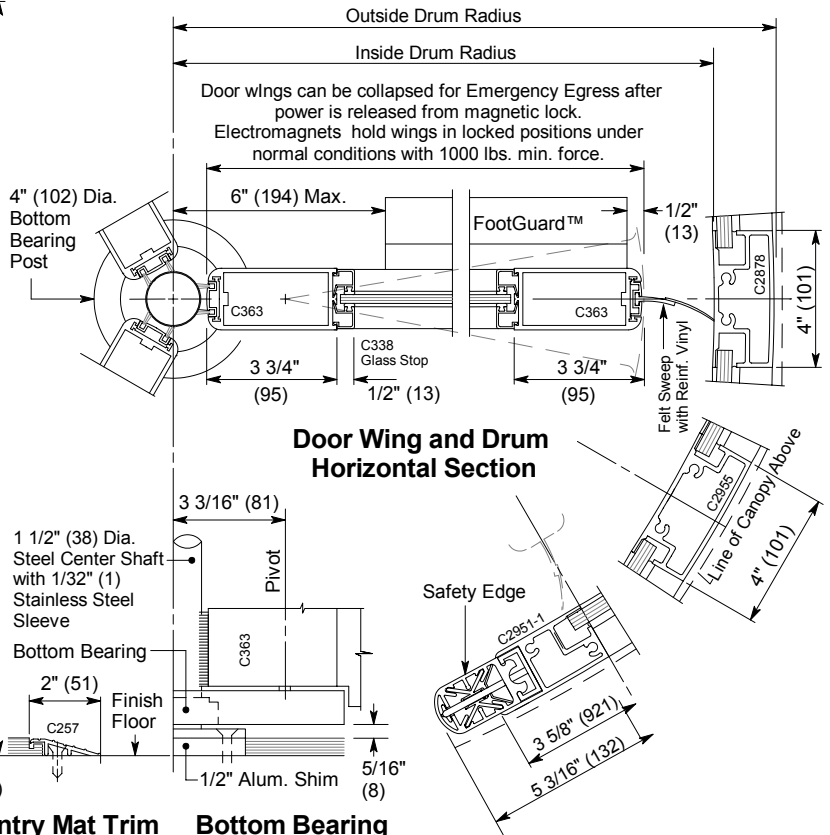
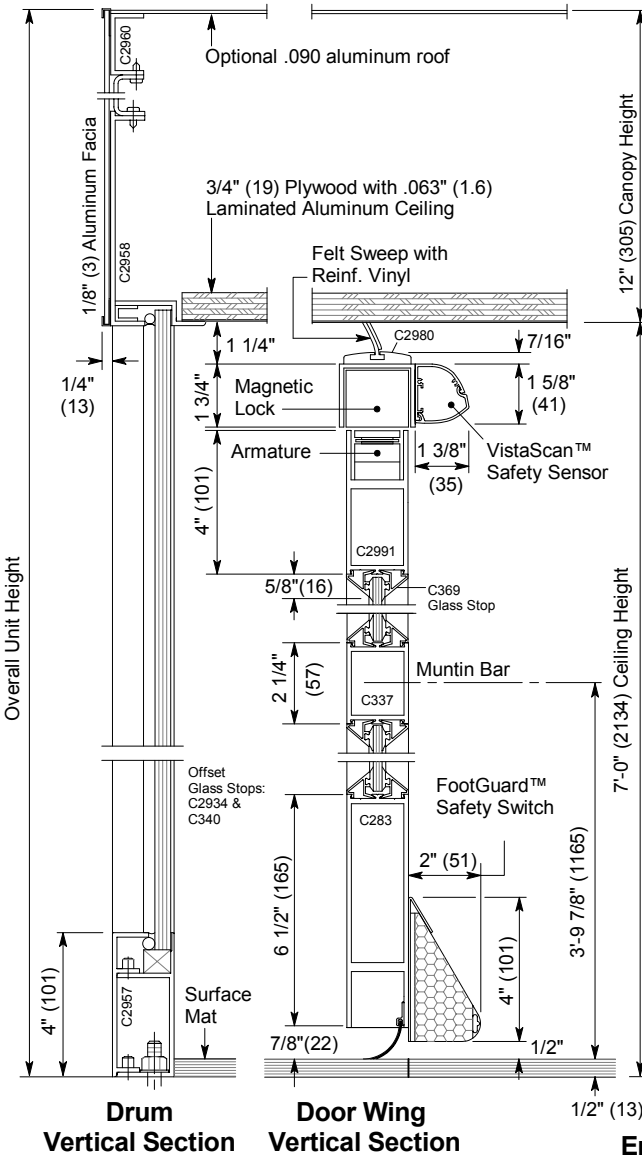
- Door unit is surface mounted to finish floor (floor not to exceed 1/4" out of level). Unit is free-standing with no additional support required.
- Drum can be center connected to adjacent construction or throat connected (at entry vertical rails). Allow 1/4" shim space each side & at canopy. Adjacent construction not to bear down on door unit.
- Electrical: Provide 120 VAC, 15 amp service on a dedicated 20 amp circuit breaker routed to power operator mounted within the enclosure canopy.

Operation

- Traffic is allowed to pass unrestricted from one direction and controlled from opposing direction. **Object Detection System** prevents entry of objects from unauthorized side. Motion sensors at free access side starts wing rotation on user approach at 2-6 RPM. Passage into unauthorized area will cause door to ramp to a stop, lock and announce security violation. Door then rotates to allow secure area to be cleared. Fail-safe design provides full operation for 2 hours in the event of power failure.



Floor Plan and Exterior Elevation





® 4242 Baldwin Boulevard
 Corpus Christi, Texas
 USA 78405-3399
 Tel: 800-531-3111, 361-888-5591
 Fax: 800-531-3108, 361-888-6510
 www.hortondoors.com
 The Automatic Choice

ARCHITECTURAL DETAILS

SECURITY REVOLVING DOOR ENTRANCES

ControlFlow™ 2-Way Card Access Security
Series 9241 in '+' Position
Type: 4-Wing with Segmented® Drum, Narrow Stile

F9.5

Jan 12

Standard Packages

Nominal Inside Diameter	Outside Diameter	Entry	Overall Unit Height	Rough Opening Width	Rough Opening Height
6'-0" (1830)	6'-3 1/2" (1920)	3'-10" (1168)	8'-0" (2438)	6'-4" (1930)	8'-0 1/4" (2445)
6'-6" (1981)	6'-9 1/2" (2070)	4'-2 3/8" (1280)	8'-0" (2438)	6'-10" (2083)	8'-0 1/4" (2445)
7'-0" (2134)	7'-3 1/2" (2223)	4'-6 3/4" (1391)	8'-0" (2438)	7'-4" (1930)	8'-0 1/4" (2445)

Ceiling Height: 7'-0" (2134), **Canopy Height:** 12" (305)
Glazing: Standard unit prep'd for 1/4" (6) glass. Glass provided by others.

Anodized Finish:
 Clear or Dark Bronze

- Options**
- Ceiling lights.
 - Extended, cropped or round canopy.
 - Prep up to 1" glazing.
 - Aluminum roof.
 - Custom anodized or paint finish.

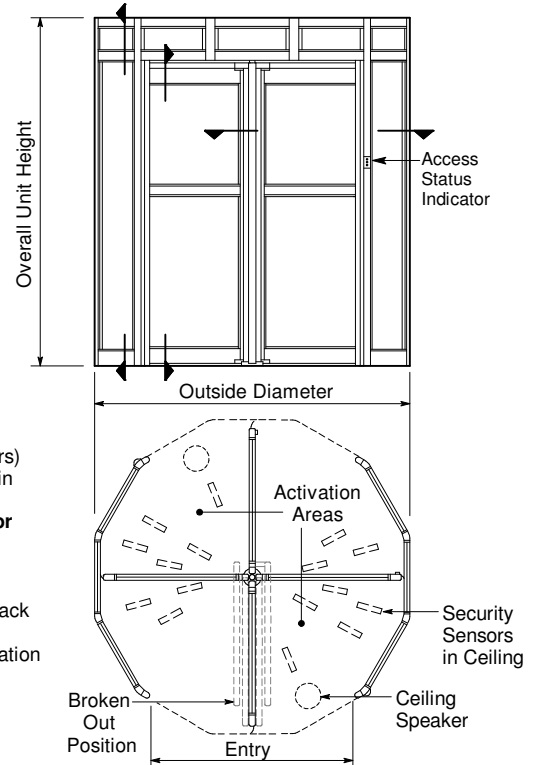
For more standards & options see Architectural Specs and Spec Details.

Installation

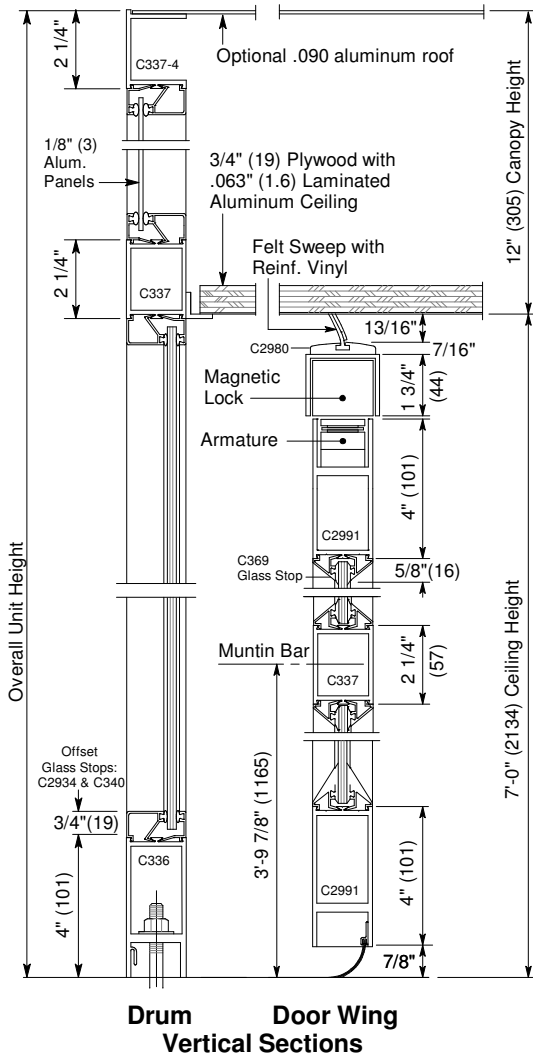
- Door unit is surface mounted to finish floor (floor not to exceed 1/4" out of level). Unit is free-standing with no additional support required.
- Drum can be center or throat connected (at entry vertical rails) connected to adjacent construction. Allow 1/4" shim space each side & at canopy. Adjacent construction not to bear down on door unit.
- Electrical: Provide 120 VAC, 15 amp service on a dedicated 20 amp circuit breaker routed to power operator mounted within the enclosure canopy.

Operation

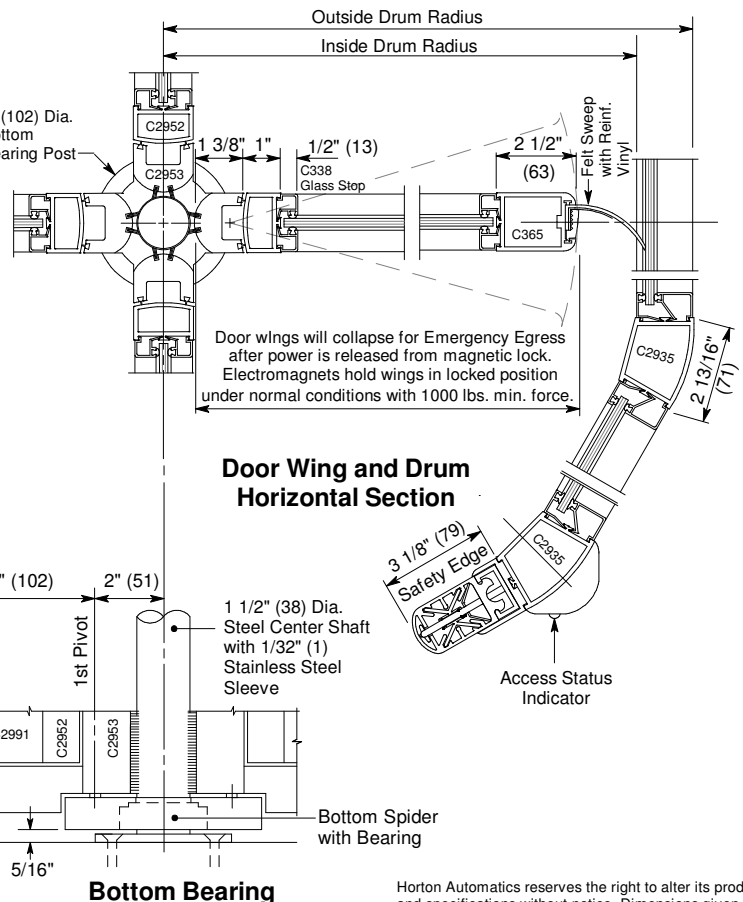
- Traffic is controlled from both directions. An Access Control System device (by others) is required at entrance to each side to obtain passage authorization. **Stepping onto activation area will set door in motion at rate of 3-4 RPM for 1/4 turn.** Door then stops and locks. Unauthorized passage will cause door to stop, lock and announce security violation. Door rotates back to clear secure area then resumes normal rotation. Fail-safe design provides full operation for 2 hours in the event of power failure.



Floor Plan and Exterior Elevation



Drum Door Wing Vertical Sections



Door Wing and Drum Horizontal Section

Bottom Bearing

Horton Automatics reserves the right to alter its product and specifications without notice. Dimensions given in U.S. inches followed by millimeters in parenthesis.



® 4242 Baldwin Boulevard
 Corpus Christi, Texas
 USA 78405-3399
 Tel: 800-531-3111, 361-888-5591
 Fax: 800-531-3108, 361-888-6510
 www.hortondoors.com
 The Automatic Choice

ARCHITECTURAL DETAILS

SECURITY REVOLVING DOOR ENTRANCES

ControlFlow™ 2-Way Card Access Security
 Series 9241 in 'X' Position
 Type: 4-Wing with Segmented® Drum, Narrow Stile

F9.4

Jan 12

Standard Packages

Nominal Inside Diameter	Outside Diameter	Entry	Overall Unit Height	Rough Opening Width	Rough Opening Height
6'-0" (1830)	6'-3 1/2" (1920)	3'-10" (1168)	8'-0" (2438)	6'-4" (1930)	8'-0 1/4" (2445)
6'-6" (1981)	6'-9 1/2" (2070)	4'-2 3/8" (1280)	8'-0" (2438)	6'-10" (2083)	8'-0 1/4" (2445)
7'-0" (2134)	7'-3 1/2" (2223)	4'-6 3/4" (1391)	8'-0" (2438)	7'-4" (1930)	8'-0 1/4" (2445)

Ceiling Height: 7'-0" (2134), **Canopy Height:** 12" (305)
Glazing: Standard unit prep'd for 1/4" (6) glass. Glass provided by others.

Anodized Finish:
 Clear or Dark Bronze

- Options**
- Ceiling lights.
 - Extended, cropped or round canopy.
 - Prep up to 1" glazing.
 - Aluminum roof.
 - Custom anodized or paint finish.

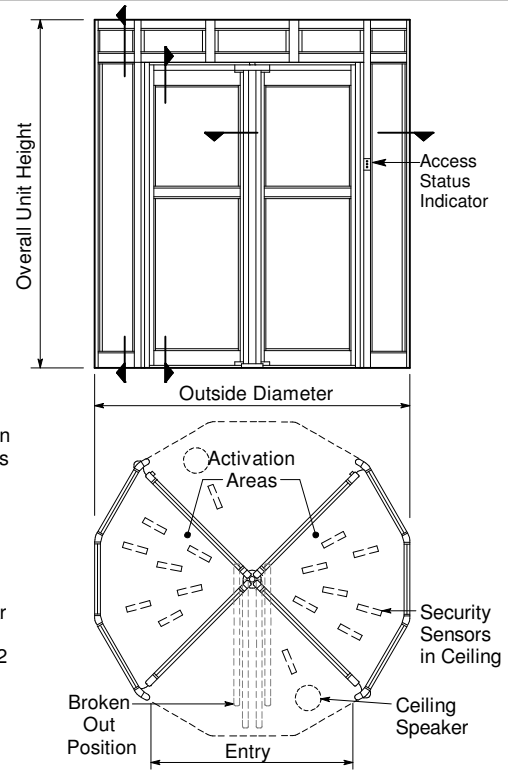
For more standards & options see Architectural Specs and Spec Details.

Installation

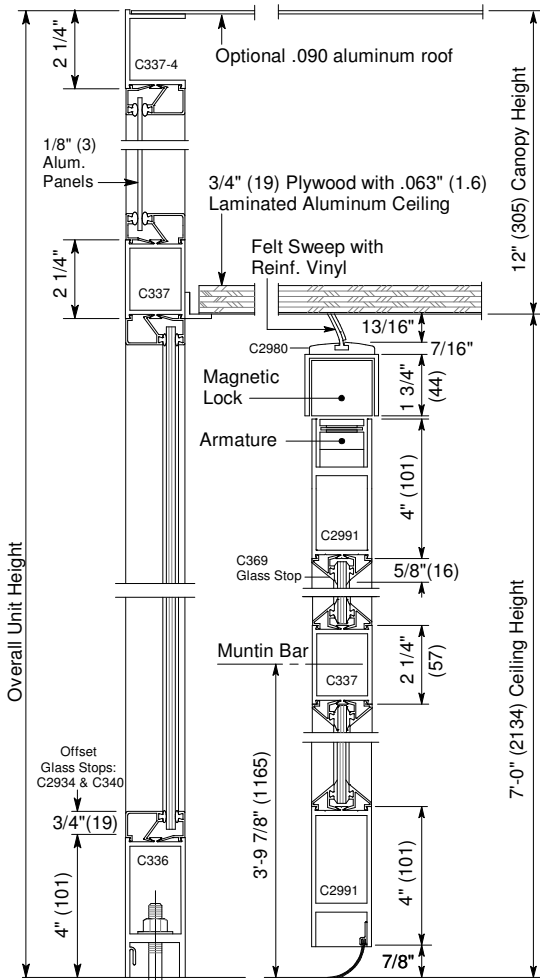
- Door unit is surface mounted to finish floor (floor not to exceed 1/4" out of level). Unit is free-standing with no additional support required.
- Drum can be center or throat connected (at entry vertical rails) connected to adjacent construction. Allow 1/4" shim space each side & at canopy. Adjacent construction not to bear down on door unit.
- Electrical: Provide 120 VAC, 15 amp service on a dedicated 20 amp circuit breaker routed to power operator mounted within the enclosure canopy.

Operation

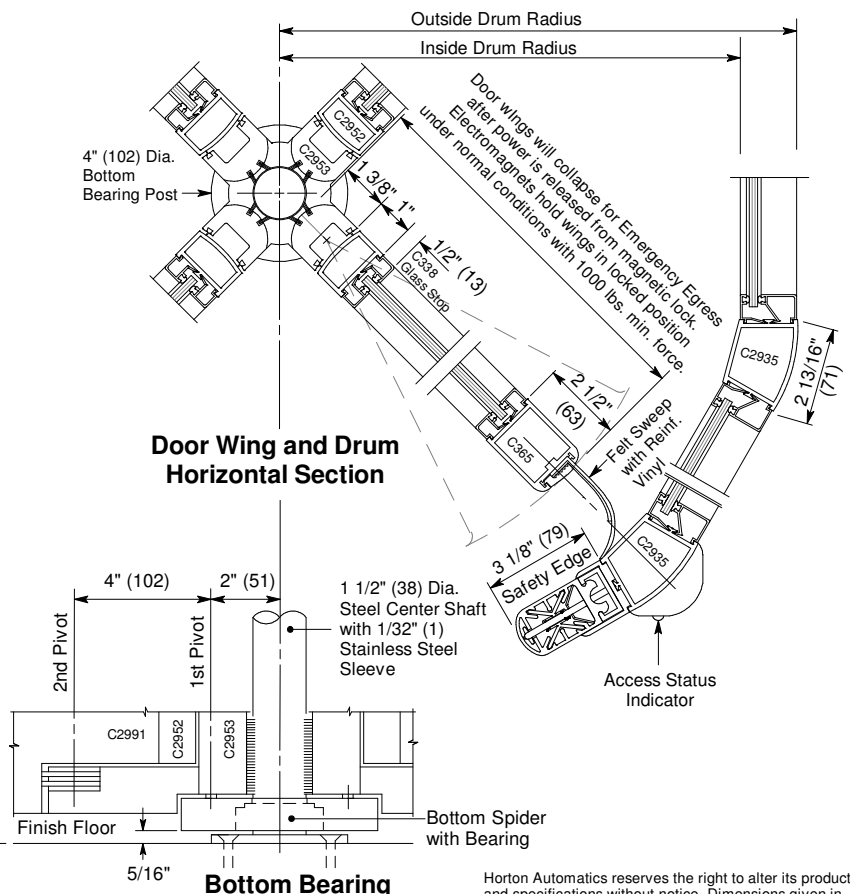
- Traffic is controlled from both directions. An Access Control System device (by others) is required at entrance to each side to obtain passage authorization. **Authorization will set door in motion at rate of 3-4 RPM for 1/2 turn.** Door then stops and locks. Unauthorized passage will cause door to stop, lock and announce security violation. Door rotates back to clear secure area then resumes normal rotation. Fail-safe design provides full operation for 2 hours in the event of power failure.



Floor Plan and Exterior Elevation



Drum Door Wing Vertical Sections



Door Wing and Drum Horizontal Section

Bottom Bearing

Horton Automatics reserves the right to alter its product and specifications without notice. Dimensions given in U.S. inches followed by millimeters in parenthesis.



® 4242 Baldwin Boulevard
 Corpus Christi, Texas
 USA 78405-3399
 Tel: 800-531-3111, 361-888-5591
 Fax: 800-531-3108, 361-888-6510
 www.hortondoors.com
 The Automatic Choice

ARCHITECTURAL DETAILS

SECURITY REVOLVING DOOR ENTRANCES

ControlFlow™ 2-Way Card Access Security
 Series 9240 in '+' Position
 Type: 4-Wing with Round Drum, Narrow Stile

F9.7

Jan 12

Standard Packages

Nominal Inside Diameter	Outside Diameter	Entry	Overall Unit Height	Rough Opening Width	Rough Opening Height
6'-0" (1830)	6'-3 1/2" (1920)	3'-10 7/8" (1191)	8'-0" (2438)	6'-4" (1930)	8'-0 1/4" (2445)
6'-6" (1981)	6'-9 1/2" (2070)	4'-3 1/8" (1280)	8'-0" (2438)	6'-10" (2083)	8'-0 1/4" (2445)
7'-0" (2134)	7'-3 1/2" (2223)	4'-7 3/8" (1391)	8'-0" (2438)	7'-4" (1930)	8'-0 1/4" (2445)

Ceiling Height: 7'-0" (2134), **Canopy Height:** 12" (305)
Glazing: Standard wing prep'd for 1/4" (6) glass. Glass provided by others.
 Standard drum provided with 7/16" clear laminated curved glass.

Anodized Finish:
 Clear or Dark Bronze

- Options**
- Ceiling lights.
 - Extended or cropped canopy.
 - Prep up to 1" glazing in wings.
 - Aluminum roof.
 - Custom anodized or paint finish.

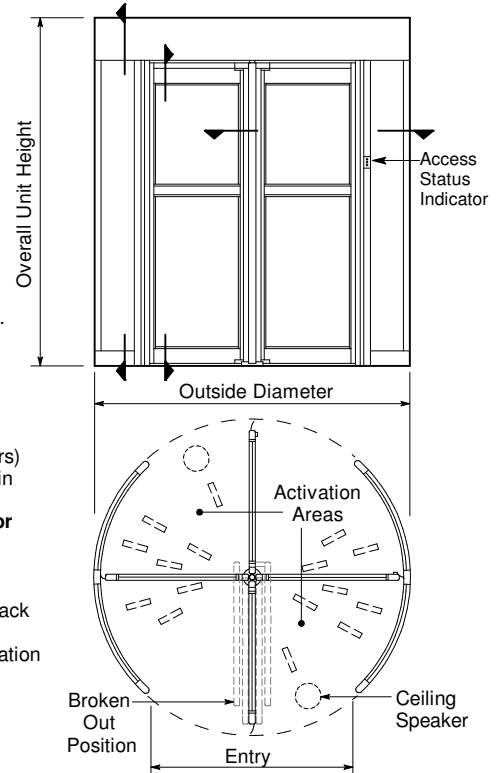
For more standards & options see Architectural Specs and Spec Details.

Installation

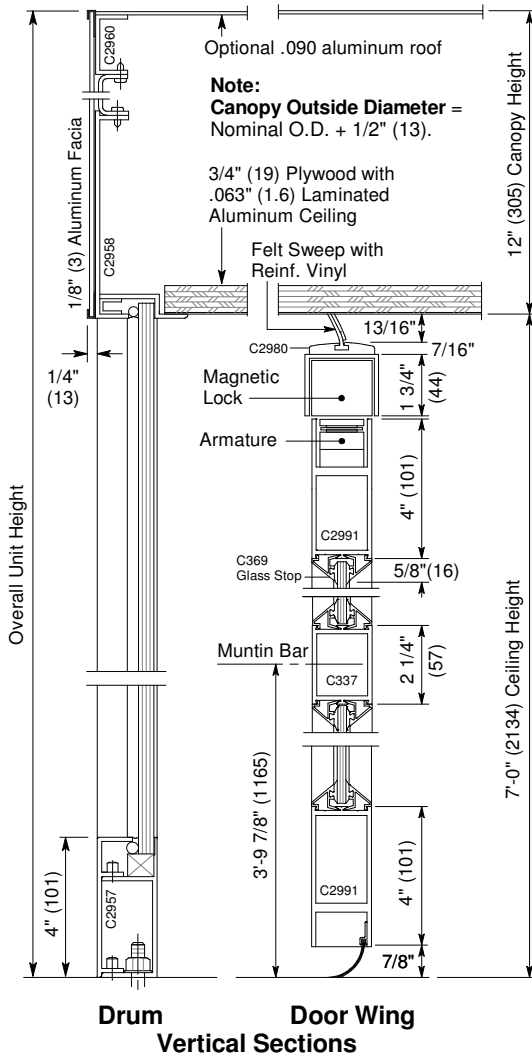
- Door unit is surface mounted to finish floor (floor not to exceed 1/4" out of level). Unit is free-standing with no additional support required.
- Drum can be center or throat connected (at entry vertical rails) connected to adjacent construction. Allow 1/4" shim space each side & at canopy. Adjacent construction not to bear down on door unit.
- Electrical: Provide 120 VAC, 15 amp service on a dedicated 20 amp circuit breaker routed to power operator mounted within the enclosure canopy.

Operation

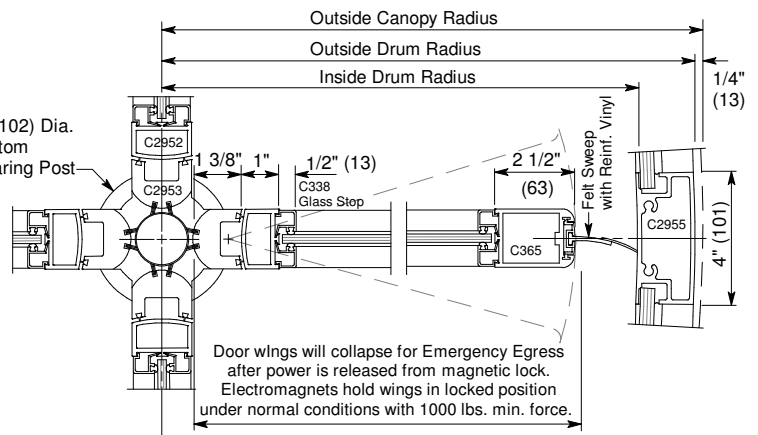
- Traffic is controlled from both directions. An Access Control System device (by others) is required at entrance to each side to obtain passage authorization. **Stepping onto activation area will set door in motion at rate of 3-4 RPM for 1/4 turn.** Door then stops and locks. Unauthorized passage will cause door to stop, lock and announce security violation. Door rotates back to clear secure area then resumes normal rotation. Fail-safe design provides full operation for 2 hours in the event of power failure.



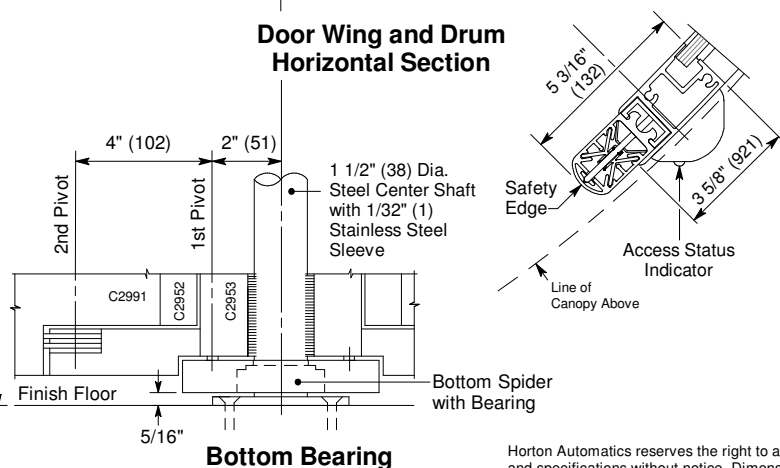
Floor Plan and Exterior Elevation



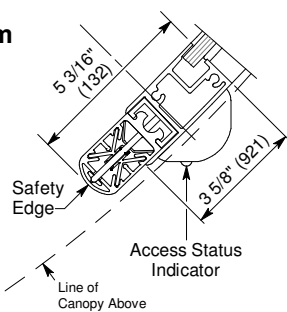
Drum Door Wing Vertical Sections



Door Wing and Drum Horizontal Section



Bottom Bearing



Horton Automatics reserves the right to alter its product and specifications without notice. Dimensions given in U.S. inches followed by millimeters in parenthesis.



® 4242 Baldwin Boulevard
 Corpus Christi, Texas
 USA 78405-3399
 Tel: 800-531-3111, 361-888-5591
 Fax: 800-531-3108, 361-888-6510
 www.hortondoors.com
 The Automatic Choice

ARCHITECTURAL DETAILS

SECURITY REVOLVING DOOR ENTRANCES

ControlFlow™ 2-Way Card Access Security
Series 9240 in 'X' Position
Type: 4-Wing with Round Drum, Narrow Stile

F9.6

Jan 12

Standard Packages

Nominal Inside Diameter	Outside Diameter	Entry	Overall Unit Height	Rough Opening Width	Rough Opening Height
6'-0" (1830)	6'-3 1/2" (1920)	3'-10 7/8" (1191)	8'-0" (2438)	6'-4" (1930)	8'-0 1/4" (2445)
6'-6" (1981)	6'-9 1/2" (2070)	4'-3 1/8" (1280)	8'-0" (2438)	6'-10" (2083)	8'-0 1/4" (2445)
7'-0" (2134)	7'-3 1/2" (2223)	4'-7 3/8" (1391)	8'-0" (2438)	7'-4" (1930)	8'-0 1/4" (2445)

Ceiling Height: 7'-0" (2134), **Canopy Height:** 12" (305)
Glazing: Standard wing prep'd for 1/4" (6) glass. Glass provided by others.
 Standard drum provided with 7/16" clear laminated curved glass.

Anodized Finish:
 Clear or Dark Bronze

- Options**
- Ceiling lights.
 - Extended or cropped canopy.
 - Prep up to 1" glazing in wings.
 - Aluminum roof.
 - Custom anodized or paint finish.

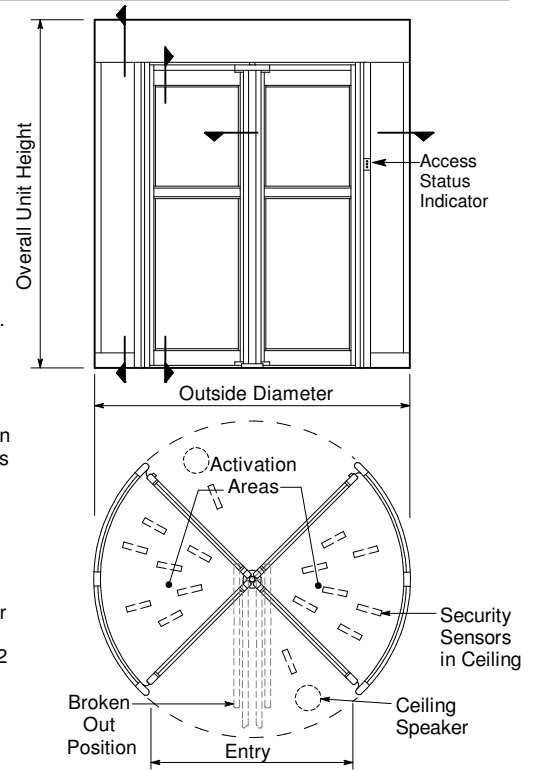
For more standards & options see Architectural Specs and Spec Details.

Installation

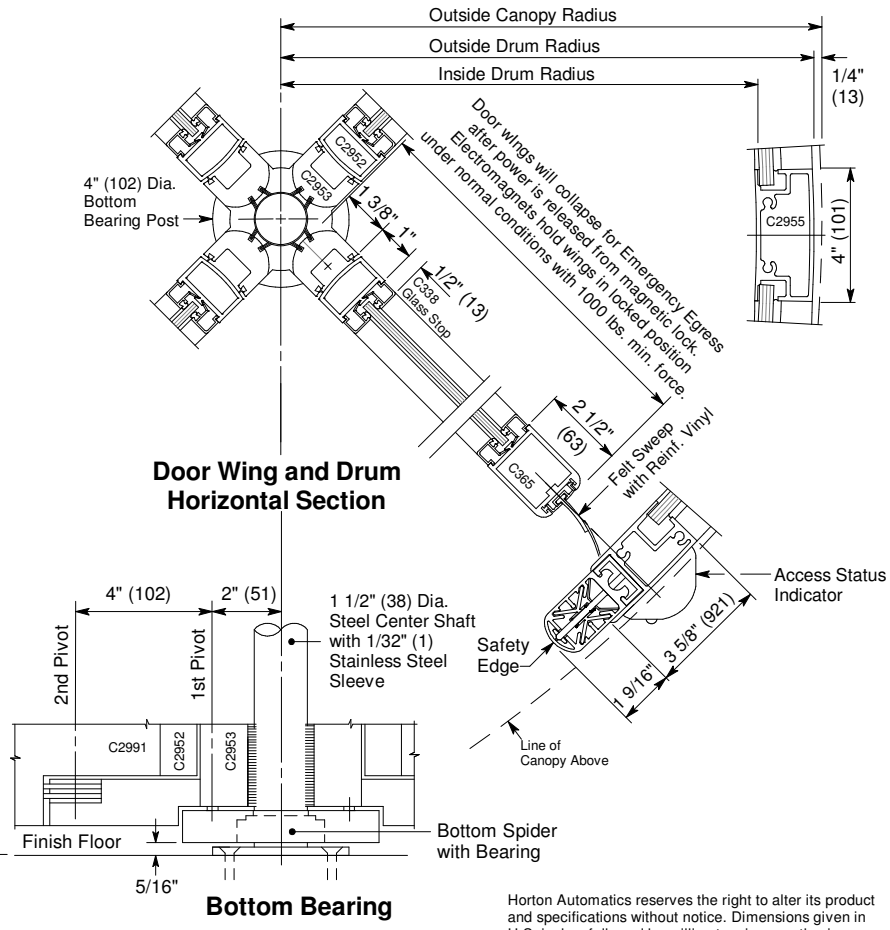
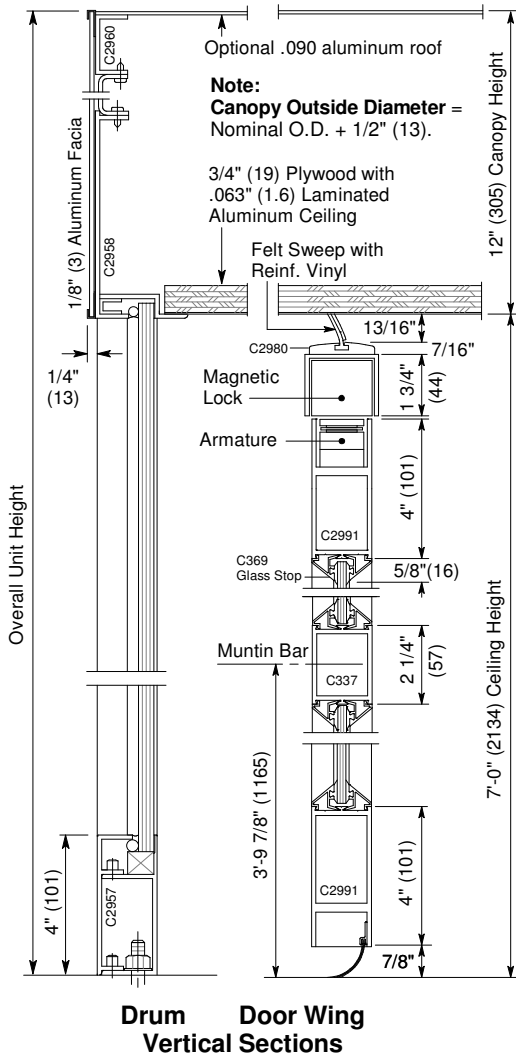
- Door unit is surface mounted to finish floor (floor not to exceed 1/4" out of level). Unit is free-standing with no additional support required.
- Drum can be center or throat connected (at entry vertical rails) connected to adjacent construction. Allow 1/4" shim space each side & at canopy. Adjacent construction not to bear down on door unit.
- Electrical: Provide 120 VAC, 15 amp service on a dedicated 20 amp circuit breaker routed to power operator mounted within the enclosure canopy.

Operation

- Traffic is controlled from both directions. An Access Control System device (by others) is required at entrance to each side to obtain passage authorization. **Authorization will set door in motion at rate of 3-4 RPM for 1/2 turn.** Door then stops and locks. Unauthorized passage will cause door to stop, lock and announce security violation. Door rotates back to clear secure area then resumes normal rotation. Fail-safe design provides full operation for 2 hours in the event of power failure.



Floor Plan and Exterior Elevation



Horton Automatics reserves the right to alter its product and specifications without notice. Dimensions given in U.S. inches followed by millimeters in parenthesis.



® 4242 Baldwin Boulevard
 Corpus Christi, Texas
 USA 78405-3399
 Tel: 800-531-3111, 361-888-5591
 Fax: 800-531-3108, 361-888-6510
 www.hortonddoors.com
 The Automatic Choice

ARCHITECTURAL DETAILS

REVOLVING DOORS

ControlFlow® 2-Way Card Access Security
Series 9241 in '+' Position with Visdom HS®
Type: 4-Wing with Segmented® Drum, Narrow Stile

F2.26

Jan 08

Standard Packages

Nominal Inside Diameter	Outside Diameter	Entry	Overall Unit Height	Rough Opening Width	Rough Opening Height
6'-0" (1830)	6'-3 1/2" (1920)	3'-10" (1168)	8'-0" (2438)	6'-4" (1930)	8'-0 1/4" (2445)
6'-6" (1981)	6'-9 1/2" (2070)	4'-2 3/8" (1280)	8'-0" (2438)	6'-10" (2083)	8'-0 1/4" (2445)
7'-0" (2134)	7'-3 1/2" (2223)	4'-6 3/4" (1391)	8'-0" (2438)	7'-4" (1930)	8'-0 1/4" (2445)

Ceiling Height: 7'-0" (2134), **Canopy Height:** 12" (305)
Glazing: Standard unit prep'd for 1/4" (6) glass. Glass provided by others.

Anodized Finish:
 Clear or Dark Bronze

- Options**
- Ceiling lights.
 - Extended, cropped or round canopy.
 - Prep up to 1" glazing.
 - Aluminum roof.
 - Custom anodized or paint finish.
 - Ceiling height to 9'-0".

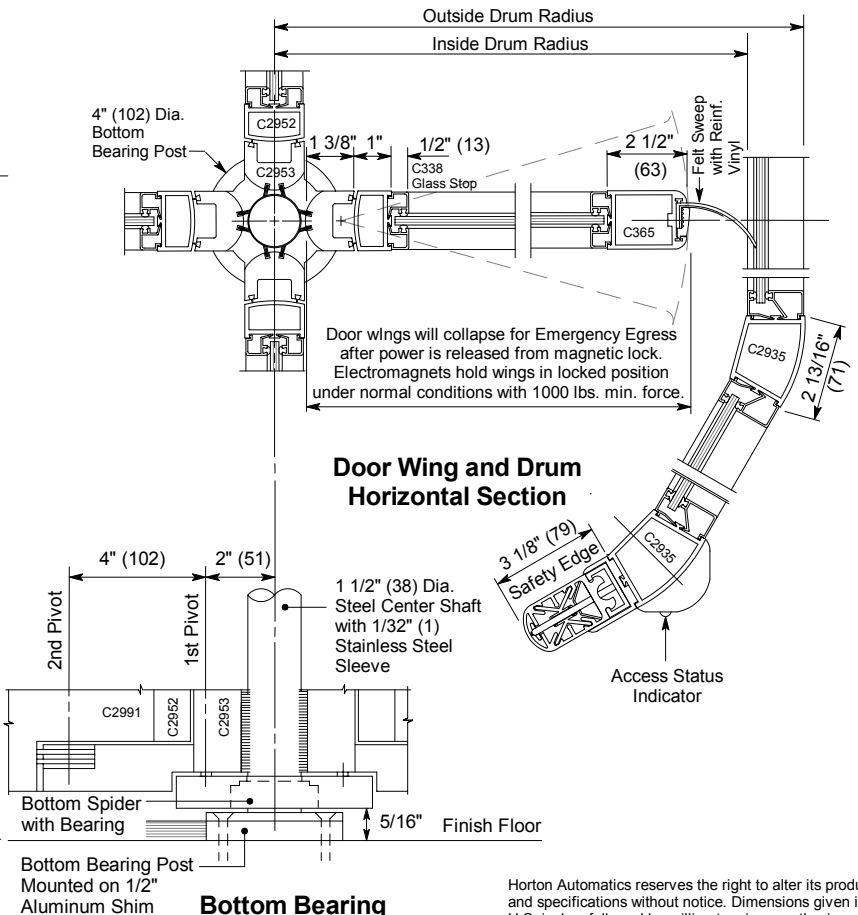
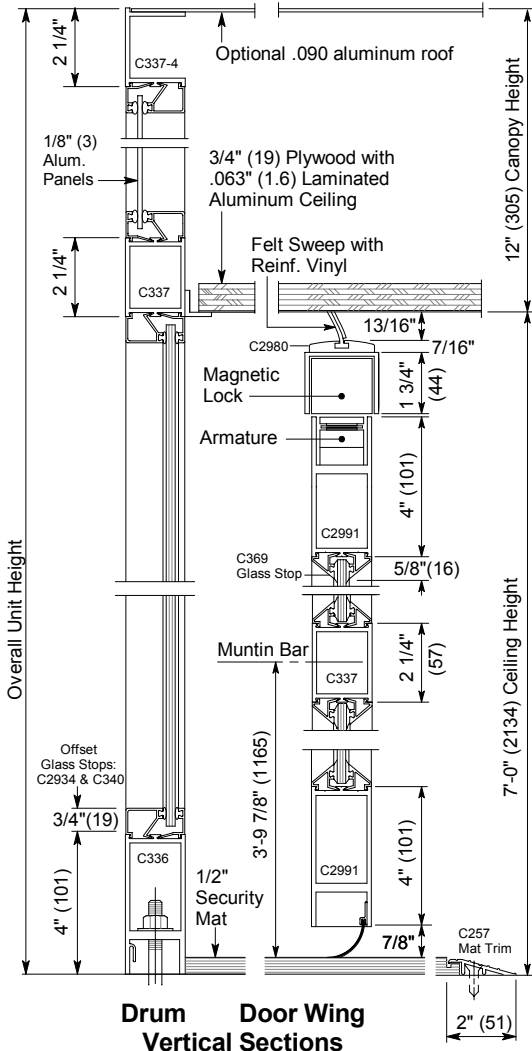
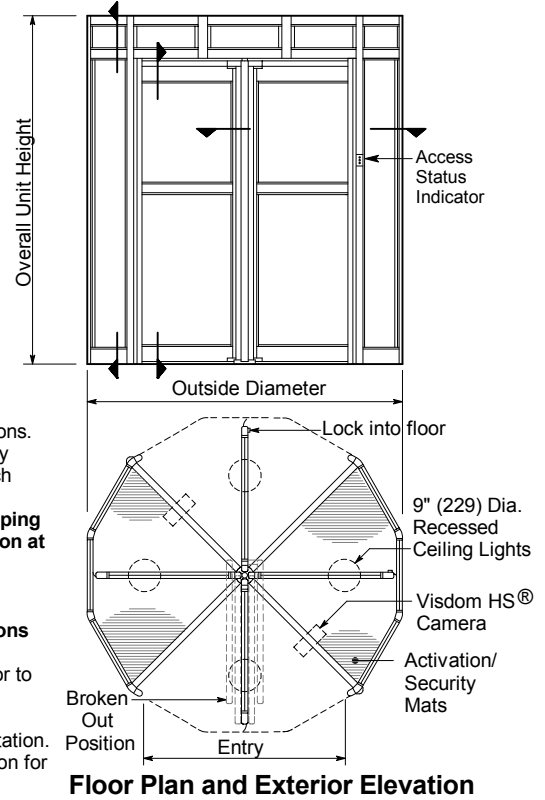
For more standards & options see Architectural Specs (p.F10.0) and Spec Details (p. F3.0).

Installation

- Door unit is surface mounted to finish floor (floor not to exceed 1/4" out of level). Unit is free-standing with no additional support required.
- Drum can be center connected to adjacent construction or throat connected (at entry vertical rails) (see p. F1.1). Allow 1/4" shim space each side & at canopy. Adjacent construction not to bear down on door unit.
- Electrical: Provide 120 VAC, 15 amp service on a dedicated 20 amp circuit breaker routed to power operator mounted within the enclosure canopy.

Operation

- Traffic is controlled from both directions. An Access Control System device (by others) is required at entrance to each side to obtain passage authorization. **Authorization activates mats - Stepping onto entry mat will set door in motion at rate of 3-4 RPM for 1/4 turn.** Door then stops and locks. **Visdom HS® system will detect piggybacking and tailgating violations with date/time overlay on video.** Unauthorized passage will cause door to stop, lock and announce security violation. Door rotates back to clear secure area then resumes normal rotation. Fail-safe design provides full operation for 2 hours in the event of power failure.



Horton Automatics reserves the right to alter its product and specifications without notice. Dimensions given in U.S. inches followed by millimeters in parenthesis.



® 4242 Baldwin Boulevard
 Corpus Christi, Texas
 USA 78405-3399
 Tel: 800-531-3111, 361-888-5591
 Fax: 800-531-3108, 361-888-6510
 www.hortondoors.com
 The Automatic Choice

ARCHITECTURAL DETAILS

REVOLVING DOORS

ControlFlow® 2-Way Card Access Security
Series 9241 in 'X' Position with Visdom HS®
Type: 4-Wing with Segmented® Drum, Narrow Stile

F2.27

Jan 08

Standard Packages

Nominal Inside Diameter	Outside Diameter	Entry	Overall Unit Height	Rough Opening Width	Rough Opening Height
6'-0" (1830)	6'-3 1/2" (1920)	3'-10" (1168)	8'-0" (2438)	6'-4" (1930)	8'-0 1/4" (2445)
6'-6" (1981)	6'-9 1/2" (2070)	4'-2 3/8" (1280)	8'-0" (2438)	6'-10" (2083)	8'-0 1/4" (2445)
7'-0" (2134)	7'-3 1/2" (2223)	4'-6 3/4" (1391)	8'-0" (2438)	7'-4" (1930)	8'-0 1/4" (2445)

Ceiling Height: 7'-0" (2134), **Canopy Height:** 12" (305)
Glazing: Standard unit prep'd for 1/4" (6) glass. Glass provided by others.
Anodized Finish: Clear or Dark Bronze

- Options**
- Ceiling lights.
 - Extended, cropped or round canopy.
 - Prep up to 1" glazing.
 - Aluminum roof.
 - Custom anodized or paint finish.
 - Ceiling height to 9'-0".

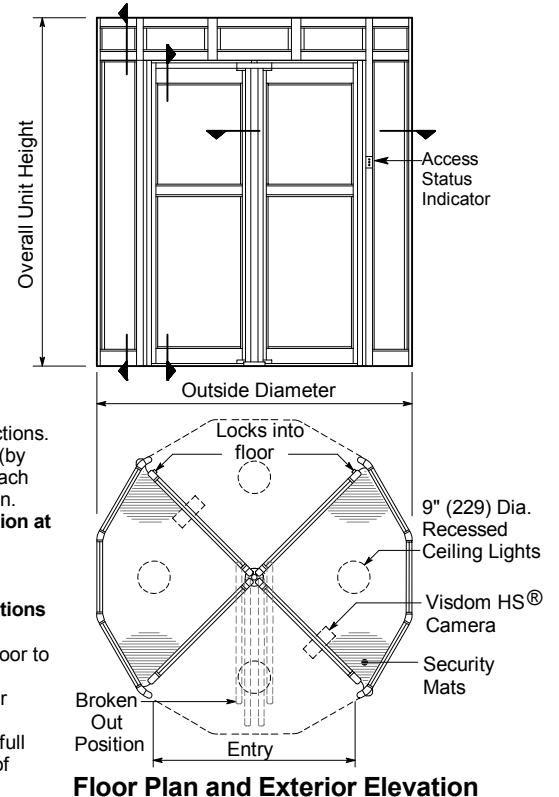
For more standards & options see **Architectural Specs (p.F10.0)** and **Spec Details (p. F3.0)**.

Installation

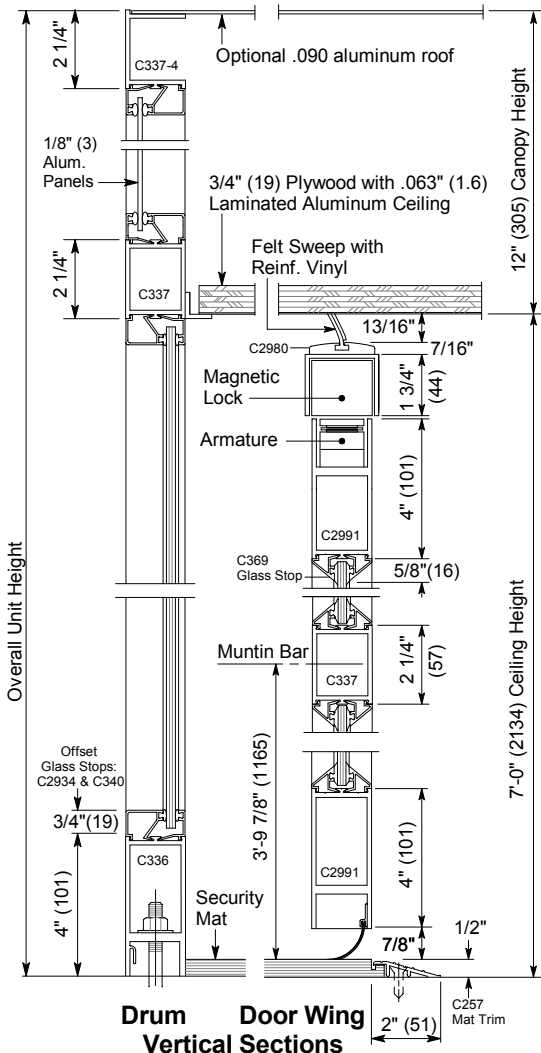
- Door unit is surface mounted to finish floor (floor not to exceed 1/4" out of level). Unit is free-standing with no additional support required.
- Drum can be center connected to adjacent construction or throat connected (at entry vertical rails) (see p. F1.1). Allow 1/4" shim space each side & at canopy. Adjacent construction not to bear down on door unit.
- Electrical: Provide 120 VAC, 15 amp service on a dedicated 20 amp circuit breaker routed to power operator mounted within the enclosure canopy.

Operation

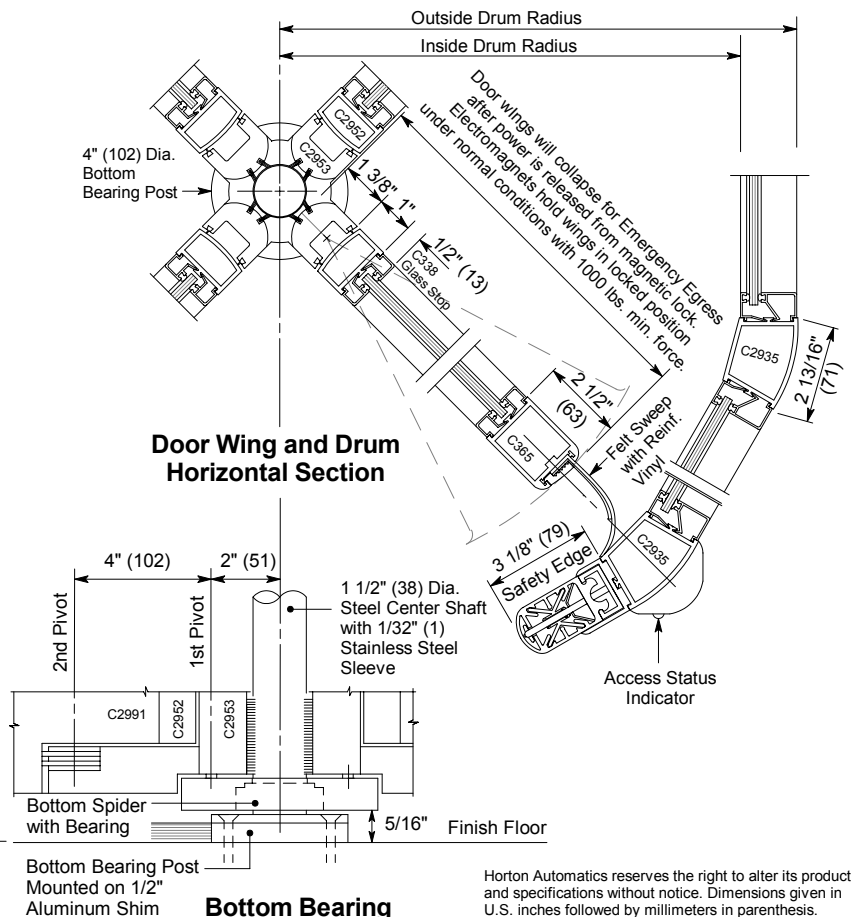
- Traffic is controlled from both directions. An Access Control System device (by others) is required at entrance to each side to obtain passage authorization. **Authorization will set door in motion at rate of 3-4 RPM for 1/2 turn.** Door then stops and locks. **Visdom HS® system will detect piggybacking and tailgating violations with date/time overlay on video.** Unauthorized passage will cause door to stop, lock and announce security violation. Door rotates back to clear secure area then resumes normal rotation. Fail-safe design provides full operation for 2 hours in the event of power failure.



Floor Plan and Exterior Elevation



Drum Door Wing Vertical Sections



Door Wing and Drum Horizontal Section

Bottom Bearing

Horton Automatics reserves the right to alter its product and specifications without notice. Dimensions given in U.S. inches followed by millimeters in parenthesis.

ARCHITECTURAL DETAILS

REVOLVING DOORS

ControlFlow® 2-Way Card Access Security
Series 9240 in '+' Position with Visdom HS®
Type: 4-Wing with Round Drum, Narrow Stile

F2.28

Jan 09

Standard Packages

Nominal Inside Diameter	Outside Diameter	Entry	Overall Unit Height	Rough Opening Width	Rough Opening Height
6'-0" (1830)	6'-3 1/2" (1920)	3'-10 7/8" (1191)	8'-0" (2438)	6'-4" (1930)	8'-0 1/4" (2445)
6'-6" (1981)	6'-9 1/2" (2070)	4'-3 1/8" (1280)	8'-0" (2438)	6'-10" (2083)	8'-0 1/4" (2445)
7'-0" (2134)	7'-3 1/2" (2223)	4'-7 3/8" (1391)	8'-0" (2438)	7'-4" (1930)	8'-0 1/4" (2445)

Ceiling Height: 7'-0" (2134), **Canopy Height:** 12" (305)
Glazing: Standard wing prep'd for 1/4" (6) glass. Glass provided by others.
Standard drum provided with 7/16" clear laminated curved glass.

Anodized Finish:
Clear or Dark Bronze

- Options**
- Ceiling lights.
 - Extended or cropped canopy.
 - Prep up to 1" glazing in wings.
 - Aluminum roof.
 - Custom anodized or paint finish.
 - Ceiling height to 9'-0".

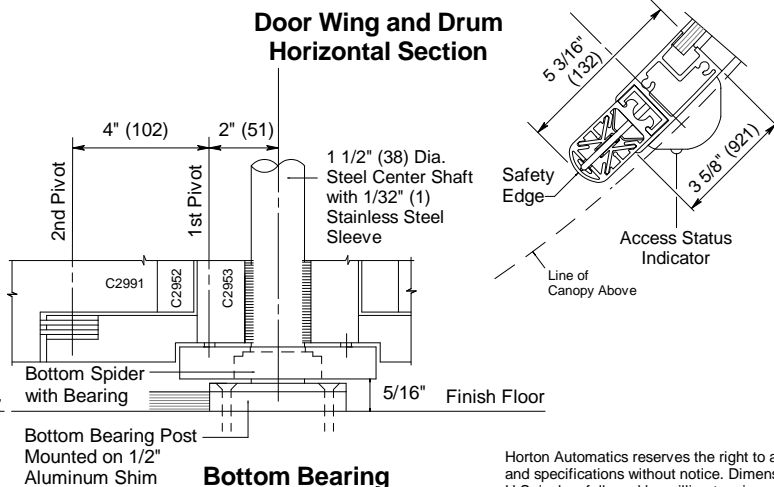
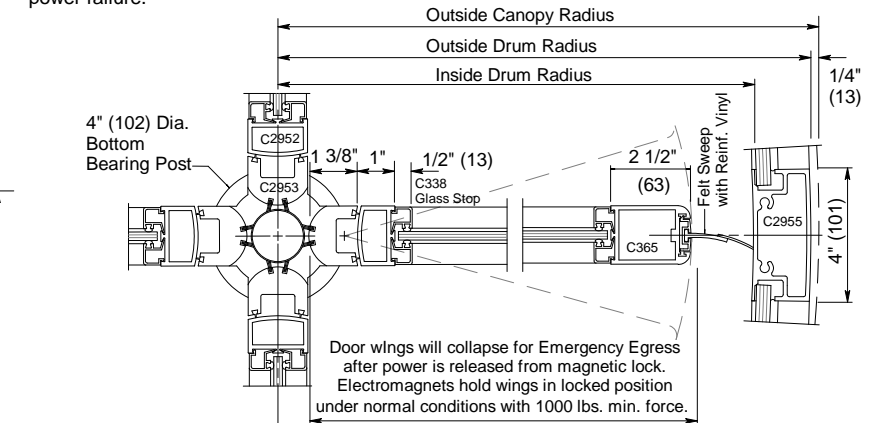
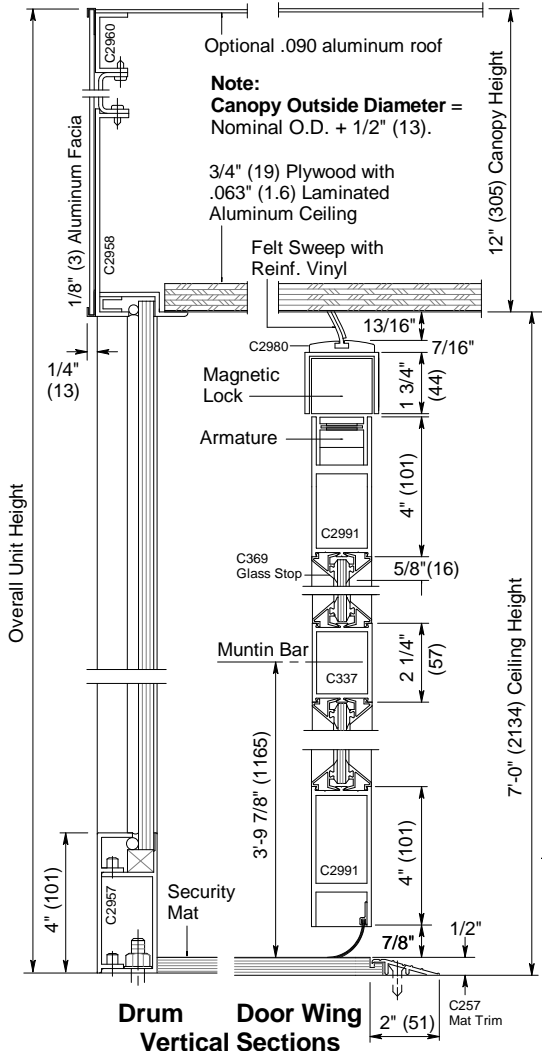
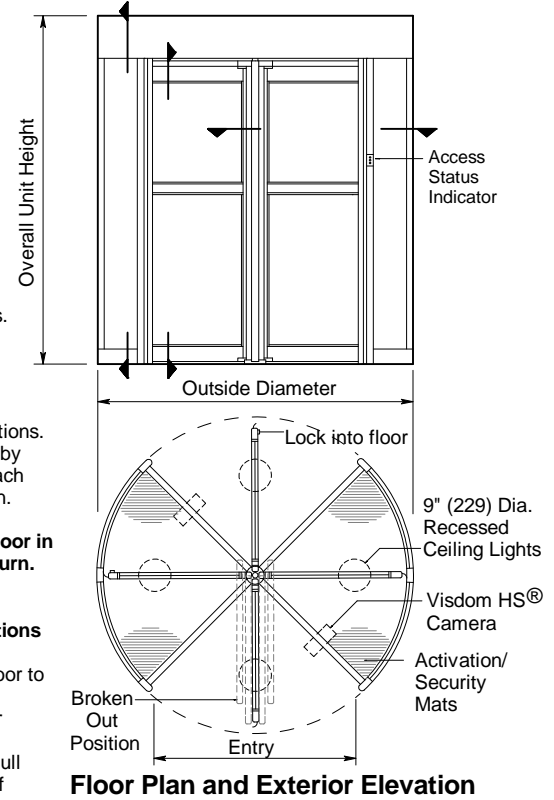
For more standards & options see Architectural Specs (p.F10.0) and Spec Details (p. F3.0).

Installation

- Door unit is surface mounted to finish floor (floor not to exceed 1/4" out of level). Unit is free-standing with no additional support required.
- Drum can be center connected to adjacent construction or throat connected (at entry vertical rails). Allow 1/4" shim space each side & at canopy. Adjacent construction not to bear down on door unit.
- Electrical: Provide 120 VAC, 15 amp service on a dedicated 20 amp circuit breaker routed to power operator mounted within the enclosure canopy.

Operation

- Traffic is controlled from both directions. An Access Control System device (by others) is required at entrance to each side to obtain passage authorization. **Authorization activates mats - Stepping onto entry mat will set door in motion at rate of 3-4 RPM for 1/4 turn.** Door then stops and locks. **Visdom HS® system will detect piggybacking and tailgating violations with date/time overlay on video.** Unauthorized passage will cause door to stop, lock and announce security violation. Door rotates back to clear secure area then resumes normal rotation. Fail-safe design provides full operation for 2 hours in the event of power failure.



Horton Automatics reserves the right to alter its product and specifications without notice. Dimensions given in U.S. inches followed by millimeters in parenthesis.



® 4242 Baldwin Boulevard
 Corpus Christi, Texas
 USA 78405-3399
 Tel: 800-531-3111, 361-888-5591
 Fax: 800-531-3108, 361-888-6510
 www.hortondoors.com
 The Automatic Choice

ARCHITECTURAL DETAILS

REVOLVING DOORS

ControlFlow® 2-Way Card Access Security
Series 9240 in 'X' Position with Visdom HS®
Type: 4-Wing with Round Drum, Narrow Stile

F2.29

Jan 08

Standard Packages

Nominal Inside Diameter	Outside Diameter	Entry	Overall Unit Height	Rough Opening Width	Rough Opening Height
6'-0" (1830)	6'-3 1/2" (1920)	3'-10 7/8" (1191)	8'-0" (2438)	6'-4" (1930)	8'-0 1/4" (2445)
6'-6" (1981)	6'-9 1/2" (2070)	4'-3 1/8" (1280)	8'-0" (2438)	6'-10" (2083)	8'-0 1/4" (2445)
7'-0" (2134)	7'-3 1/2" (2223)	4'-7 3/8" (1391)	8'-0" (2438)	7'-4" (1930)	8'-0 1/4" (2445)

Ceiling Height: 7'-0" (2134), **Canopy Height:** 12" (305)
Glazing: Standard wing prep'd for 1/4" (6) glass. Glass provided by others.
 Standard drum provided with 7/16" clear laminated curved glass.

Anodized Finish:
 Clear or Dark Bronze

- Options**
- Ceiling lights.
 - Extended or cropped canopy.
 - Prep up to 1" glazing in wings.
 - Aluminum roof.
 - Custom anodized or paint finish.
 - Ceiling height to 9'-0".

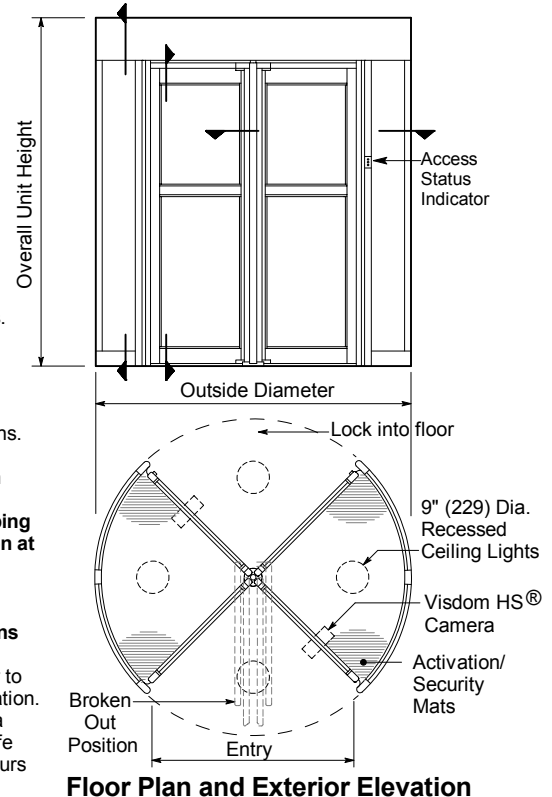
For more standards & options see Architectural Specs (p.F10.0) and Spec Details (p. F3.0).

Installation

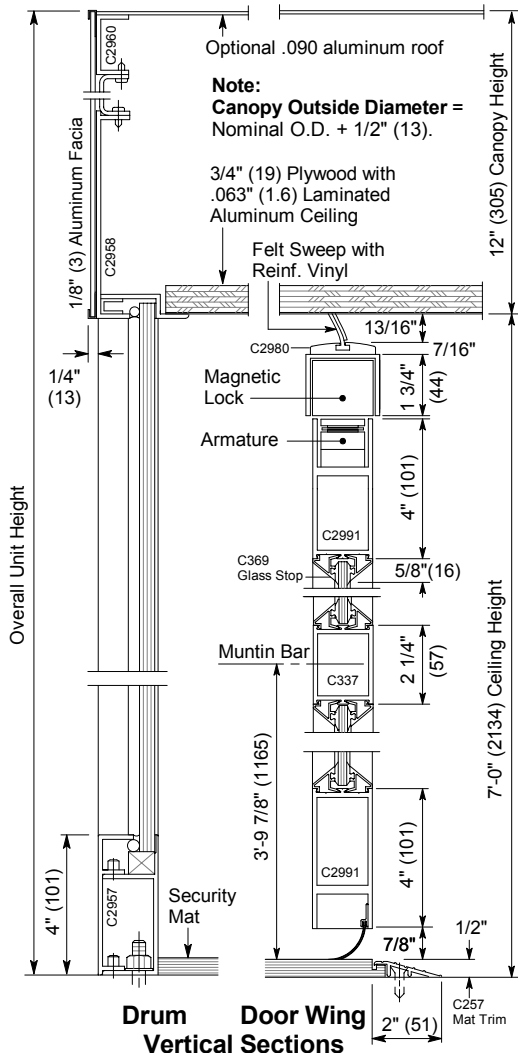
- Door unit is surface mounted to finish floor (floor not to exceed 1/4" out of level). Unit is free-standing with no additional support required.
- Drum can be center connected to adjacent construction or throat connected (at entry vertical rails). Allow 1/4" shim space each side & at canopy. Adjacent construction not to bear down on door unit.
- Electrical: Provide 120 VAC, 15 amp service on a dedicated 20 amp circuit breaker routed to power operator mounted within the enclosure canopy.

Operation

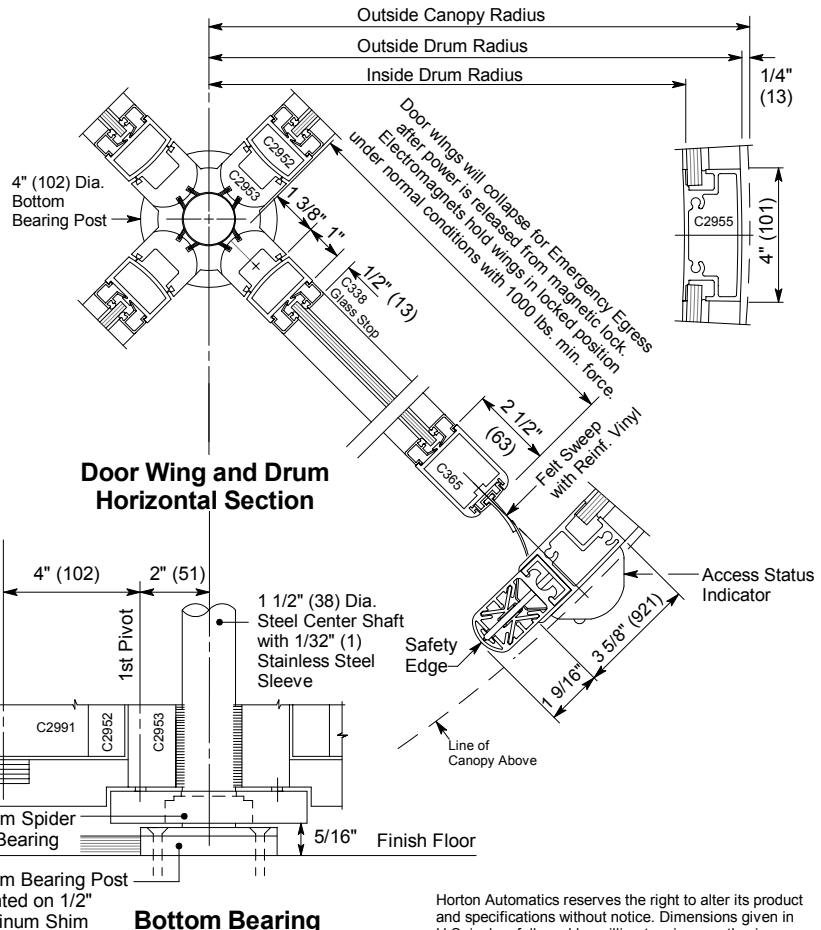
- Traffic is controlled from both directions. An Access Control System device (by others) is required at entrance to each side to obtain passage authorization. **Authorization activates mats - Stepping onto entry mat will set door in motion at rate of 3-4 RPM for 1/4 turn.** Door then stops and locks. **Visdom HS® system will detect piggybacking and tailgating violations with date/time overlay on video.** Unauthorized passage will cause door to stop, lock and announce security violation. Door rotates back to clear secure area then resumes normal rotation. Fail-safe design provides full operation for 2 hours in the event of power failure.



Floor Plan and Exterior Elevation



Drum Door Wing Vertical Sections



Horton Automatics reserves the right to alter its product and specifications without notice. Dimensions given in U.S. inches followed by millimeters in parenthesis.