



® 4242 Baldwin Boulevard
 Corpus Christi, Texas
 USA 78405-3399
 Tel: 800-531-3111, 361-888-5591
 Fax: 800-531-3108, 361-888-6510
 www.hortondoors.com
 The Automatic Choice

ARCHITECTURAL DETAILS

REVOLVING DOORS

AutoFlow® Automatic Series 9331

Type: 3-Wing with Segmented® Drum, Medium Stile

F2.8

July 10

Standard Packages

Nominal Inside Diameter	Outside Diameter	Entry	Rough Opening Width	Overall Unit Height	Rough Opening Height
10'-0" (3048)	10'-3 1/2" (3137)	4'-4 3/4" (1340)	10'- 4" (3150)	8'- 0" (2438)	8'- 0 1/4" (2445)
Ceiling Height: 7'- 0" (2134),		Canopy Height: 12" (305)		Anodized Finish: Clear or Dark Bronze	
Glazing: Standard unit prep'd for 1/4" (6) glass. Glass provided by others.					

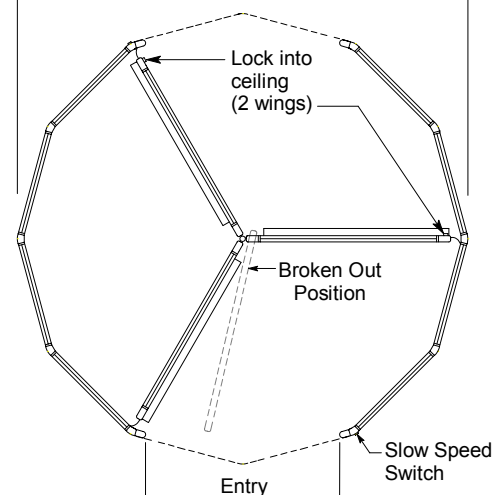
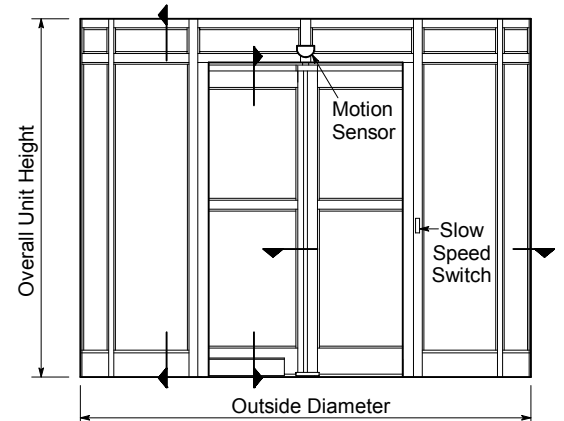
Options

- Custom ceiling height up to 9'-0".
- Ceiling lights.
- Aluminum roof.
- Extended, cropped or round canopy.
- Prep up to 1" glazing in door wings & drum.
- Custom anodized or paint finish.

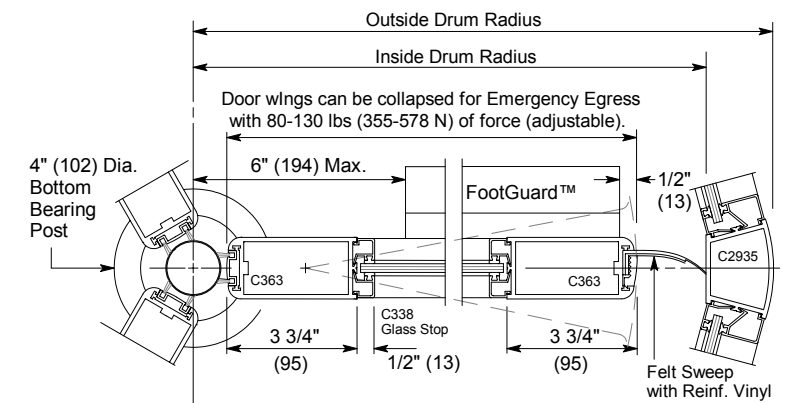
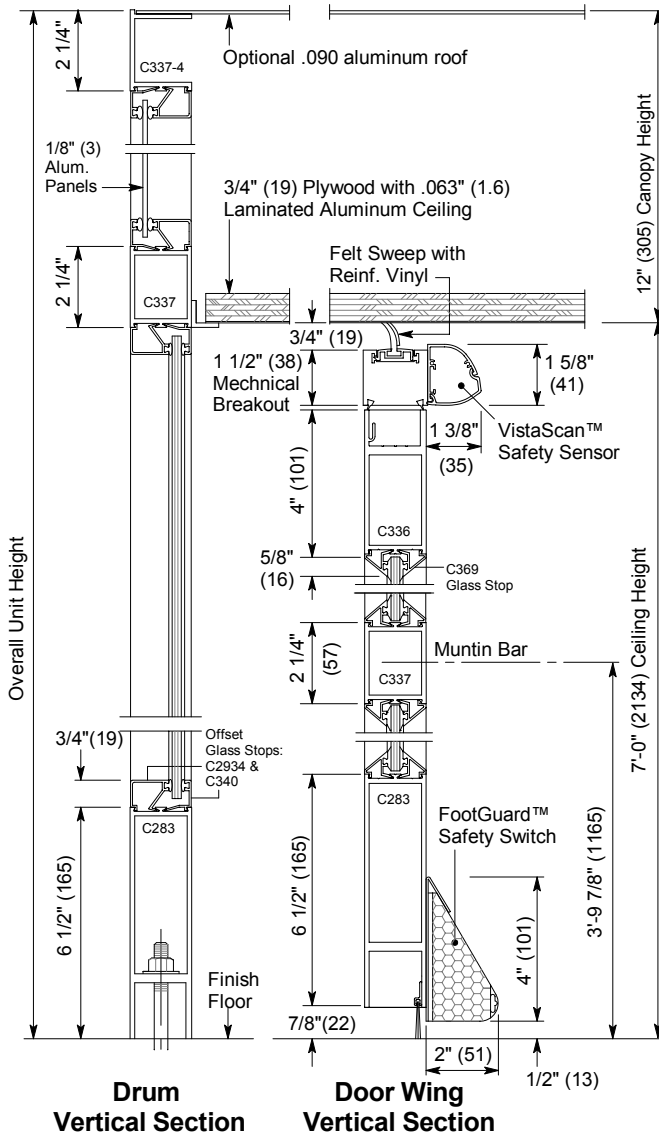
For more standards & options see Architectural Specs (p.F5.0) and Spec Details (p. F3.0).

Installation and Operation

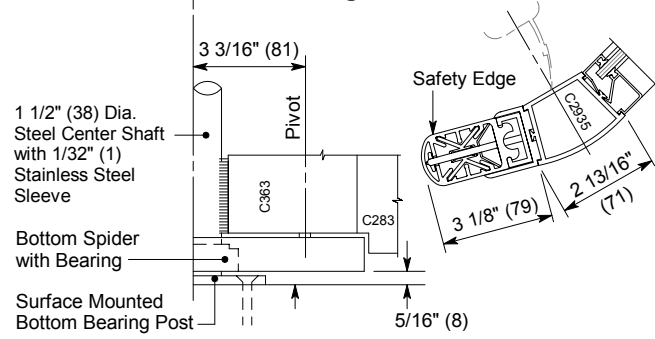
- Door unit is surface mounted to finish floor (floor not to exceed 1/4" out of level). Unit is free-standing with no additional support required.
- Drum can be center connected to adjacent construction or throat connected (at entry vertical rails). Allow 1/4" shim space each side & at canopy. Adjacent construction not to bear down on revolving door.
- Motion sensor at each entry starts wing rotation on user approach at 3-5 RPM. Push plate mounted at door entry slows door to 1-3 RPM for slower traffic.
- Electrical: Provide 120 VAC, 15 amp service on a dedicated 20 amp circuit breaker routed to power operator mounted within the enclosure canopy.



Floor Plan and Exterior Elevation



Door Wing and Drum - Horizontal Section



Bottom Bearing

Horton Automatics reserves the right to alter its product and specifications without notice. Dimensions given in U.S. inches followed by millimeters in parenthesis.



® 4242 Baldwin Boulevard
 Corpus Christi, Texas
 USA 78405-3399
 Tel: 800-531-3111, 361-888-5591
 Fax: 800-531-3108, 361-888-6510
 www.hortondoors.com
 The Automatic Choice

ARCHITECTURAL DETAILS

REVOLVING DOORS

AutoFlow® Automatic Series 9330

Type: 3-Wing with Round Drum, Medium Stile

F2.9

July 10

Standard Packages

Nominal Inside Diameter	Outside Drum Diameter	Outside Canopy Diameter	Entry	Rough Opening Width	Overall Unit Height	Rough Opening Height
10'-0" (3048)	10'-3 1/2" (3137)	10'-4" (3150)	4'-7 3/8" (1407)	10'- 4 1/2" (3162)	8'- 0" (2438)	8'- 0 1/4" (2445)
Ceiling Height: 7'- 0" (2134), Glazing: Standard wing prep'd for 1/4" (6) glass. Glass provided by others. Standard drum provided with 7/16" clear laminated curved glass.			Canopy Height: 12" (305)		Anodized Finish: Clear or Dark Bronze	

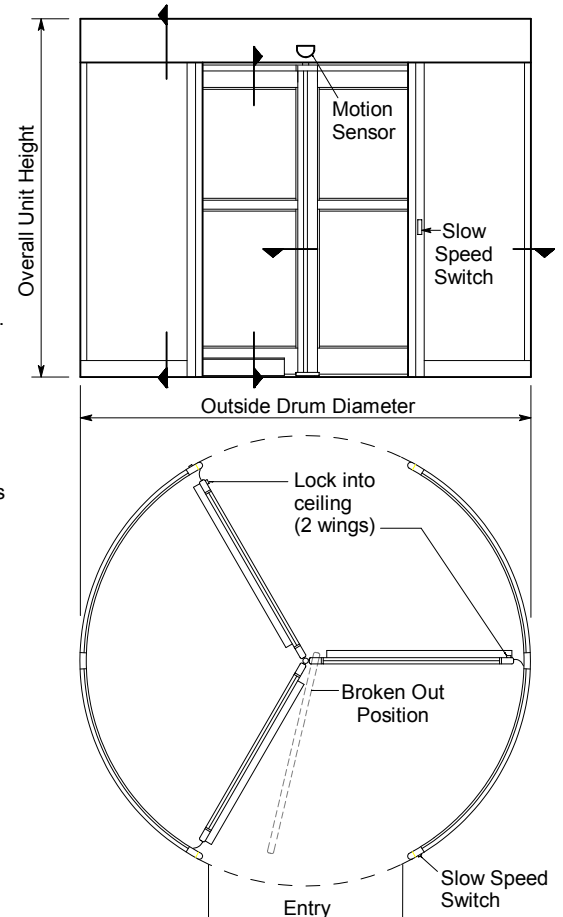
Options

- Custom ceiling height to 9'-0".
- Ceiling lights.
- Prep to 1" glazing in wings & 9/16" in drum.
- Extended or cropped canopy.
- Aluminum roof.
- Custom anodized or paint finish.

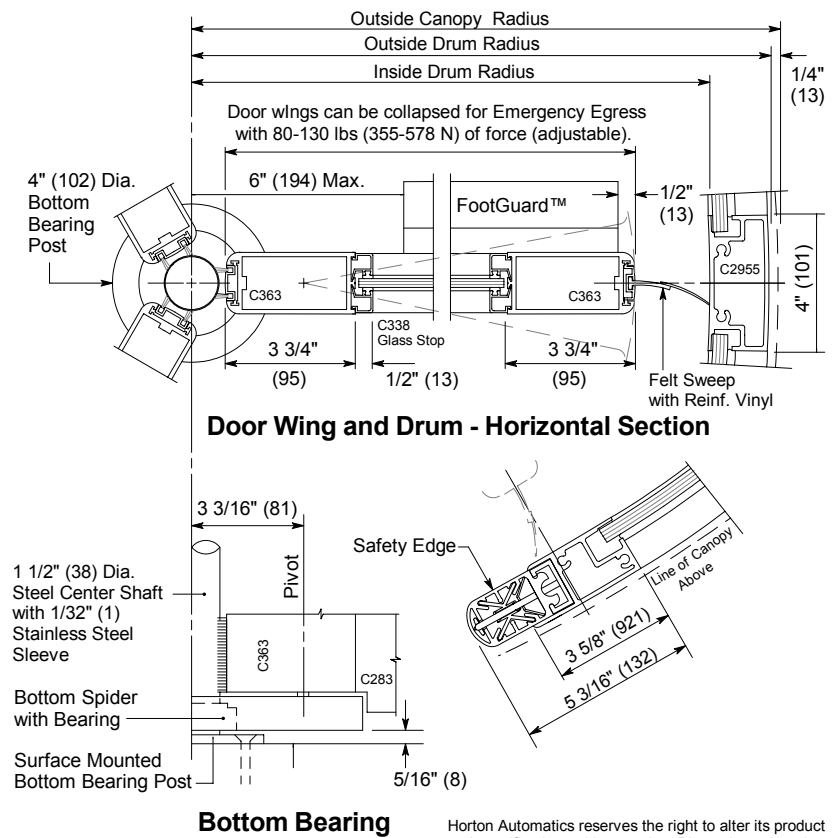
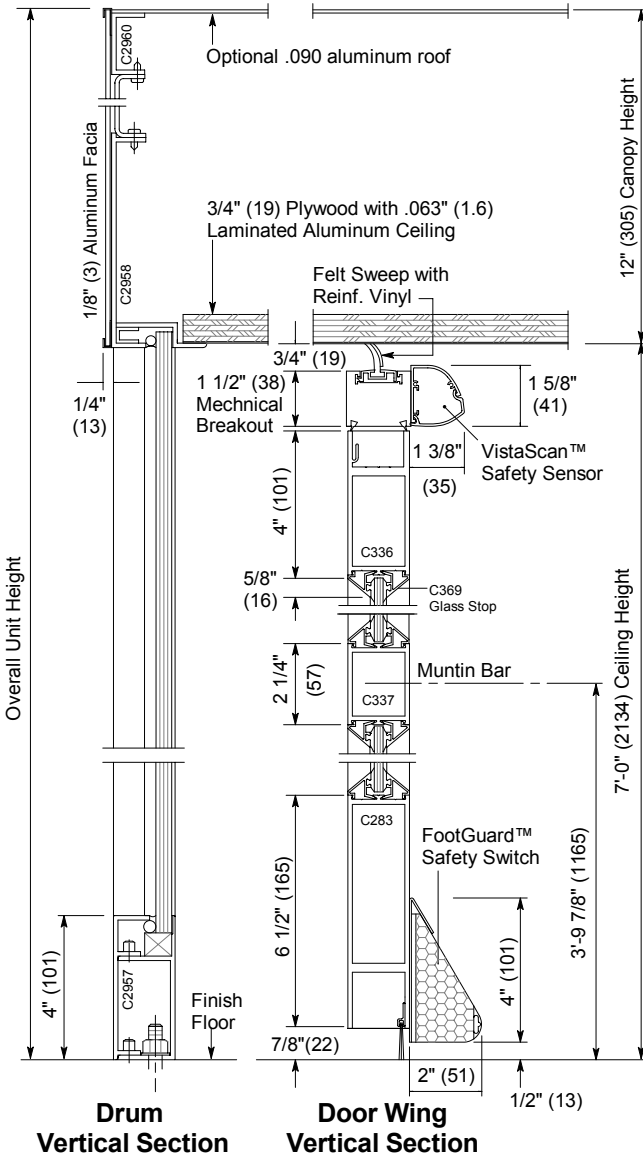
For more standards & options see Architectural Specs (p.F5.0) and Spec Details (p. F3.0).

Installation and Operation

- Door unit is surface mounted to finish floor (floor not to exceed 1/4" out of level). Unit is free-standing with no additional support required.
- Drum can be center connected to adjacent construction or throat connected (at entry vertical rails). Allow 1/4" shim space each side & at canopy. Adjacent construction not to bear down on revolving door.
- Motion sensor at each entry starts wing rotation on user approach at 3-5 RPM. Push plate mounted at door entry slows door to 1-3 RPM for slower traffic.
- Electrical: Provide 120 VAC, 15 amp service on a dedicated 20 amp circuit breaker routed to power operator mounted within the enclosure canopy.



Floor Plan and Exterior Elevation



Horton Automatics reserves the right to alter its product and specifications without notice. Dimensions given in U.S. inches followed by millimeters in parenthesis.



® 4242 Baldwin Boulevard
 Corpus Christi, Texas
 USA 78405-3399
 Tel: 800-531-3111, 361-888-5591
 Fax: 800-531-3108, 361-888-6510
 www.hortondoors.com
 The Automatic Choice

ARCHITECTURAL DETAILS

REVOLVING DOORS

MiniGrand® Automatic Series 9331MG

Type: 3-Wing with Segmented® Drum

F2.10

July 10

Standard Packages

Nominal Outside Diameter	Inside Diameter	Entry	Overall Unit Height	Rough Opening Width	Rough Opening Height
11'-0" (3353)	10'-8 1/2" (3264)	4'-9 3/4" (1467)	8'-0" (2438)	11'-0 1/2" (3366)	8'-0 1/4" (2440)
12'-0" (3658)	11'-8 1/2" (3569)	5'-3 3/4" (1619)	8'-0" (2438)	12'-0 1/2" (3670)	8'-0 1/4" (2440)

Ceiling Height: 7'-0" (2134). **Canopy Height:** 12" (305). **Anodized Finish:** Clear or Dark Bronze

Glazing: Standard unit prep'd for 1/4" (6) glass. Glass provided by others.

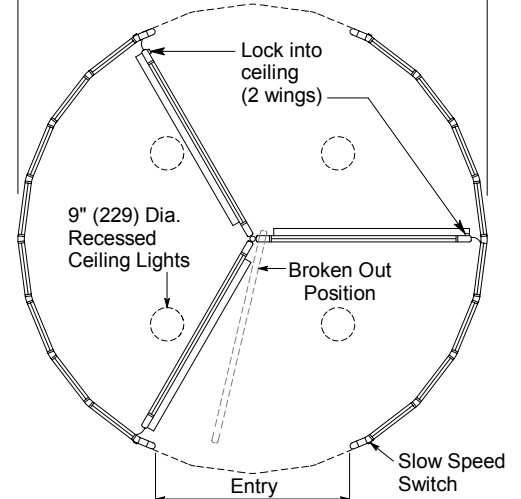
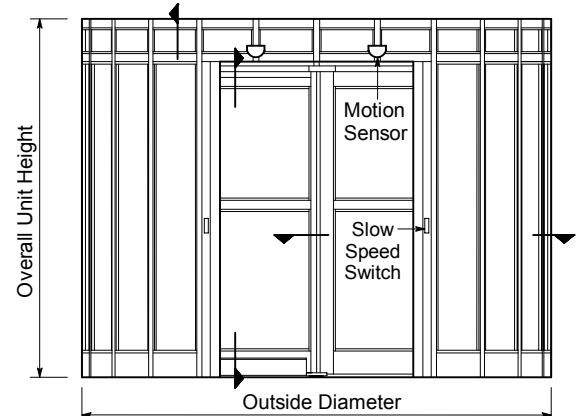
Options

- Extended, cropped or round canopy.
- Aluminum roof.
- Prep up to 1" glazing in door wings & drum.
- Custom anodized or paint finish.

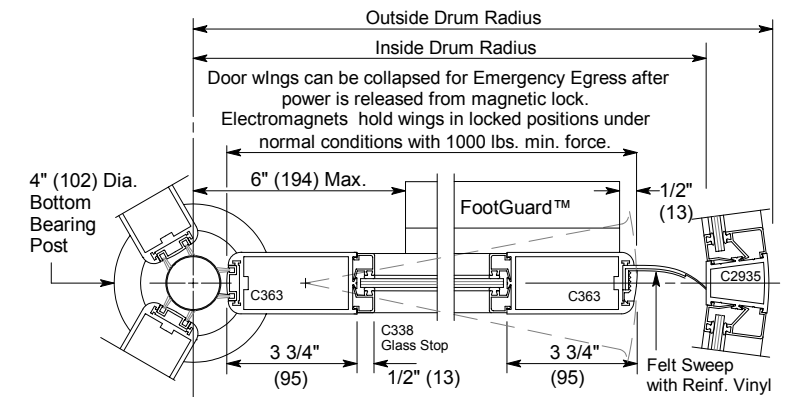
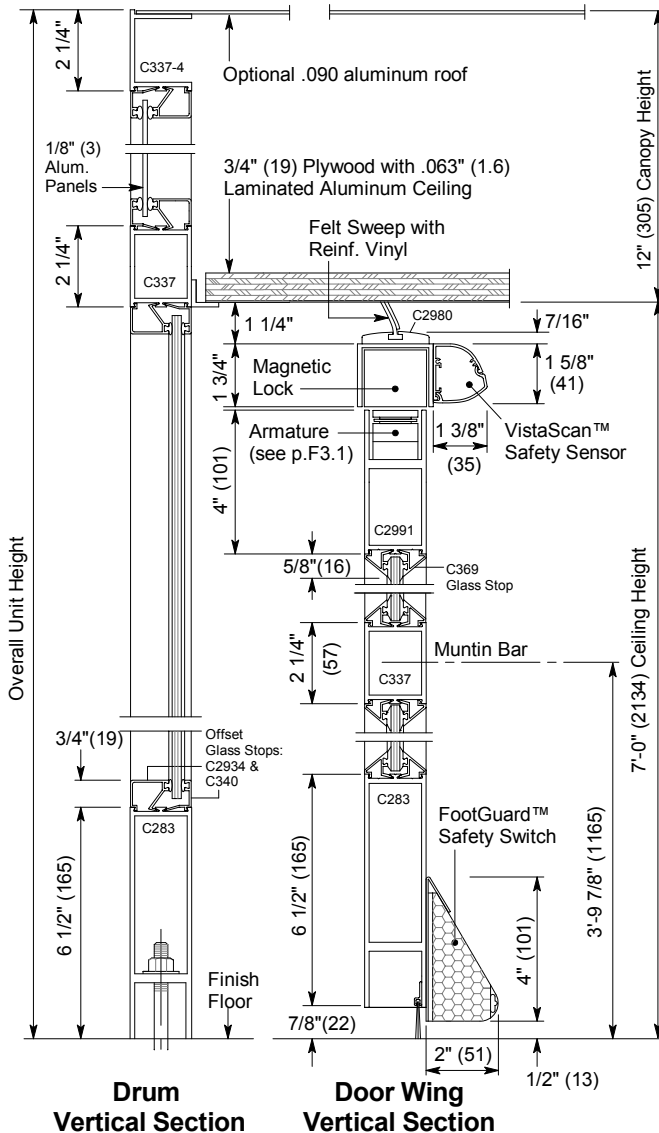
For more standards & options see Architectural Specs (p.F6.0) and Spec Details (p. F3.0).

Installation and Operation

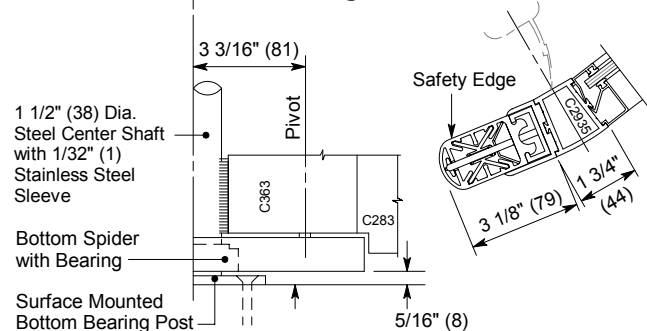
- Door unit is surface mounted to finish floor (floor not to exceed 1/4" out of level). Unit is free-standing with no additional support required.
- Drum can be center connected to adjacent construction or throat connected (at entry vertical rails). Allow 1/4" shim space each side & at canopy. Adjacent construction not to bear down on revolving door.
- Motion sensors at each entry starts wing rotation on user approach at 3-5 RPM. Push plates mounted at each side of entry slow door to 1-3 RPM for slower traffic.
- Electrical: Provide 120 VAC, 15 amp service on a dedicated 20 amp circuit breaker routed to power operator mounted within the enclosure canopy.



Floor Plan and Exterior Elevation



Door Wing and Drum - Horizontal Section



Bottom Bearing

Horton Automatics reserves the right to alter its product and specifications without notice. Dimensions given in U.S. inches followed by millimeters in parenthesis.



® 4242 Baldwin Boulevard
 Corpus Christi, Texas
 USA 78405-3399
 Tel: 800-531-3111, 361-888-5591
 Fax: 800-531-3108, 361-888-6510
 www.hortondoors.com
 The Automatic Choice

ARCHITECTURAL DETAILS

REVOLVING DOORS

MiniGrand® Automatic Series 9330MG

Type: 3-Wing with Round Drum

F2.11

July 10

Standard Packages

Nominal Outside Diameter	Inside Diameter	Entry	Overall Unit Height	Rough Opening Width	Rough Opening Height
11'-0" (3353)	10'-8 1/2" (3264)	4'-7 5/8" (1413)	8'-0" (2438)	11'-1" (3378)	8'-0 1/4"
12'-0" (3658)	11'-8 1/2" (3569)	5'-1 5/8" (1565)	8'-0" (2438)	12'-1" (3683)	8'-0 1/4"

Canopy Outside Diameter = Nominal O.D. + 1/2" (13).
 Ceiling Height: 7'-0" (2134). Canopy Height: 12" (305).
 Glazing: Standard wing prep'd for 1/4" (6) glass. Glass provided by others.
 Standard drum provided with 7/16" clear laminated curved glass.

Anodized Finish:
 Clear or Dark Bronze

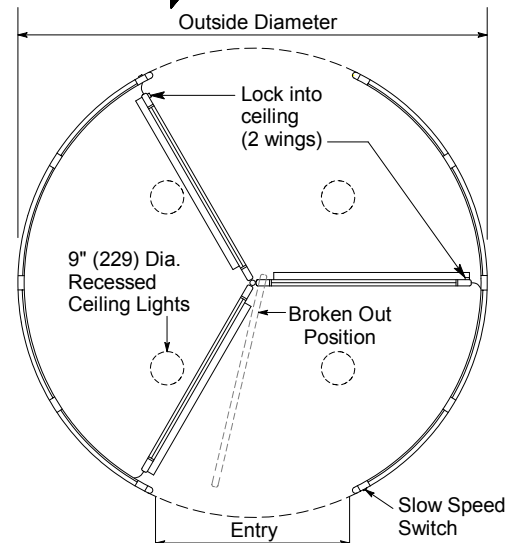
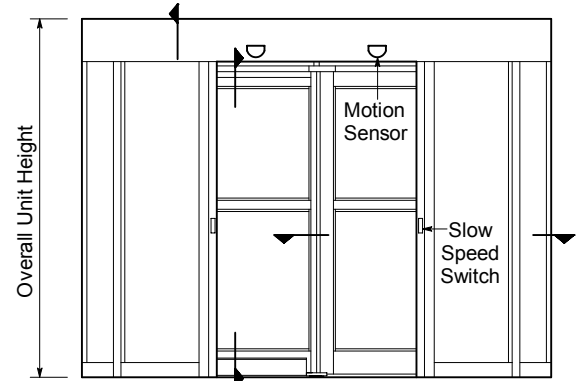
Options

- Extended or cropped canopy.
- Aluminum roof.
- Prep up to 1" glazing in wings & 9/16" in drum.
- Custom anodized or paint finish.

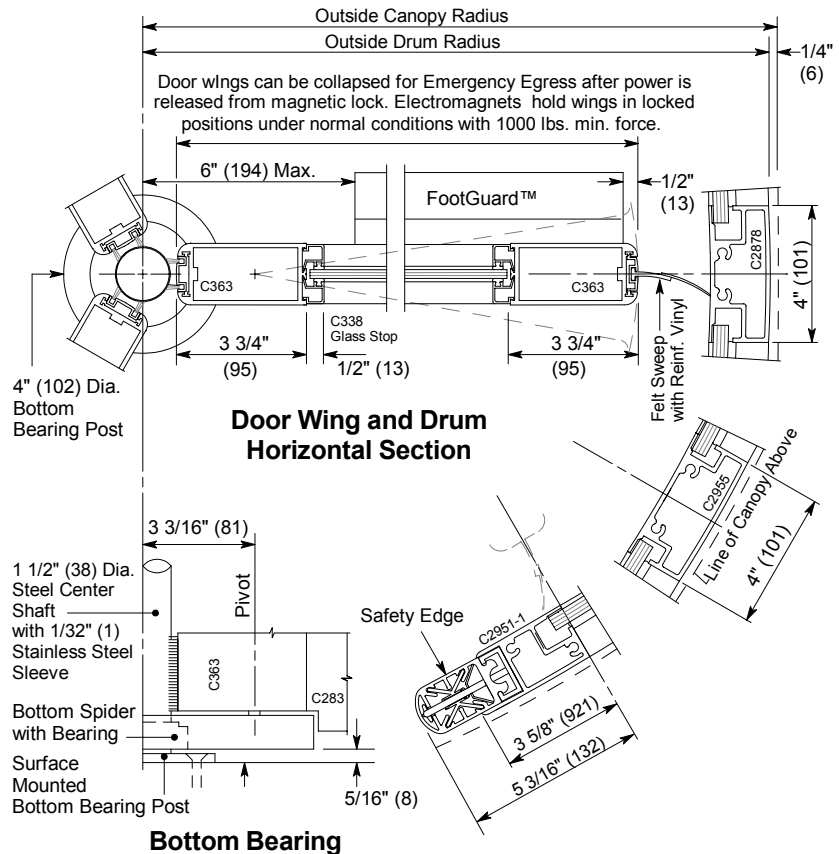
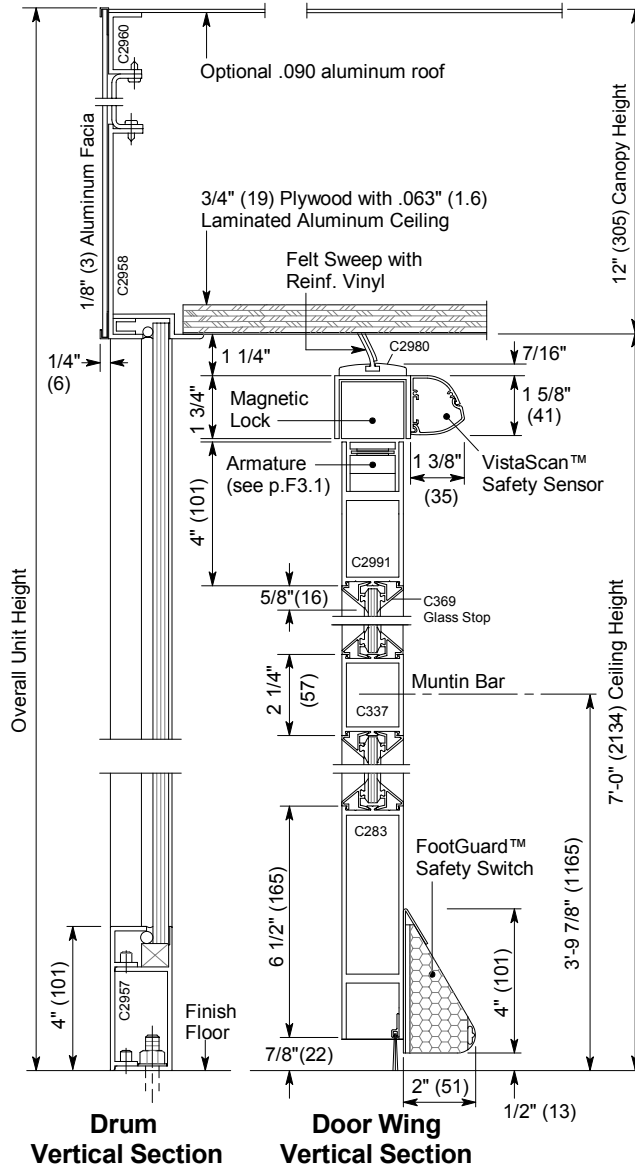
For more standards & options see Architectural Specs (p.F6.0) and Spec Details (p. F3.0).

Installation and Operation

- Door unit is surface mounted to finish floor (floor not to exceed 1/4" out of level). Unit is free-standing with no additional support required.
- Motion sensors at each entry starts wing rotation on user approach at 3-5 RPM. Push plates mounted at each side of entry slow door to 1-3 RPM for slower traffic.
- Electrical: Provide 120 VAC, 15 amp service on a dedicated 20 amp circuit breaker routed to power operator mounted within the enclosure canopy.



Floor Plan and Exterior Elevation



Door Wing and Drum Horizontal Section

Bottom Bearing



® 4242 Baldwin Boulevard
 Corpus Christi, Texas
 USA 78405-3399
 Tel: 800-531-3111, 361-888-5591
 Fax: 800-531-3108, 361-888-6510
 www.hortondoors.com
 The Automatic Choice

ARCHITECTURAL DETAILS

REVOLVING DOORS

Grand® Automatic Series 9631

Type: 3-Wing with Segmented® Drum (page 1 of 3)

F2.12

July 10

Standard Packages

Nominal Outside Diameter	Inside Diameter	Entry	Clear Access at Door Wing	Overall Unit Height	Rough Opening Width	Rough Opening Height
12'-0" (3658)	11'-8 1/2" (3569)	5'-3 3/4" (1619)	3'- 0 1/4" (921)	9'- 0" (2438)	12'-0 1/2" (3670)	9'-0 1/4" (2750)
14'-0" (4267)	13'-8 1/2" (4173)	6'-3 3/4" (1924)	4'- 0 1/4" (1226)	9'- 0" (2438)	14'-0 1/2" (4280)	9'-0 1/4" (2750)
16'-0" (4877)	15'-8 1/2" (4788)	7'-3 3/4" (2229)	5'- 0 1/4" (1530)	9'- 0" (2438)	16'-0 1/2" (4890)	9'-0 1/4" (2750)

Ceiling Height: 7'- 0" (2134).	Canopy Height: 24" (610).	Anodized Finish: Clear or Dark Bronze
Glazing: Standard unit prep'd for 1/4" (6) glass. Glass provided by others.		

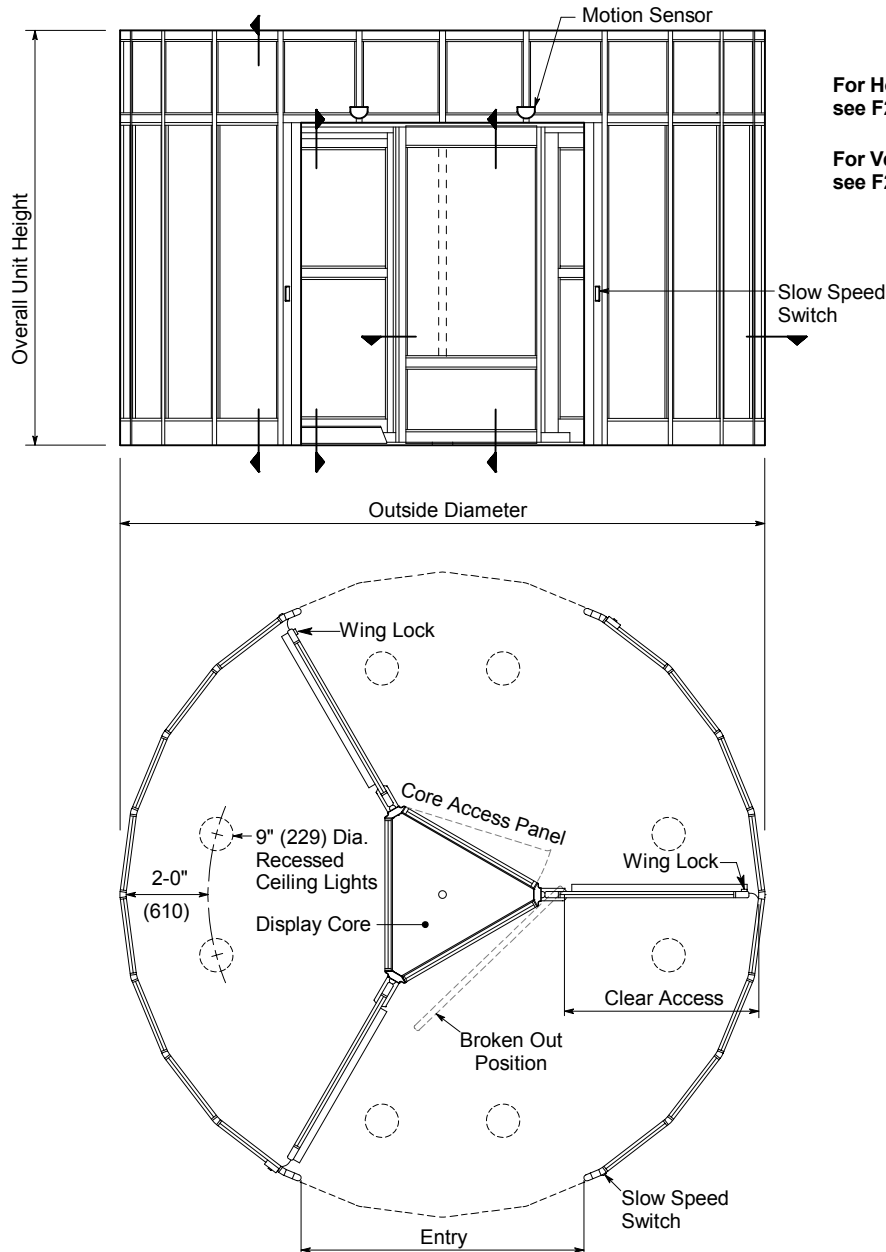
Options

- Custom ceiling height up to 8'-0".
- Extended, cropped or round canopy.
- Aluminum roof.
- Prep up to 1" glazing in door wings & drum.
- Custom anodized or paint finish.

For more standards & options see Architectural Specs (p.F7.0) and Spec Details (p. F3.0).

Installation and Operation

- Door unit is surface mounted to finish floor (floor not to exceed 1/4" out of level). Unit is free-standing with no additional support required.
- Drum can be center connected to adjacent construction or throat connected (at entry vertical rails). Allow 1/4" shim space each side & at canopy. Adjacent construction not to bear down on revolving door.
- Motion sensors at each entry starts wing rotation on user approach at 3-5 RPM. Push plates mounted at each side of entry slow door to 1-3 RPM for slower traffic.
- Electrical: Provide 120 VAC, 15 amp service on a dedicated 20 amp circuit breaker routed to power operator mounted within the enclosure canopy.



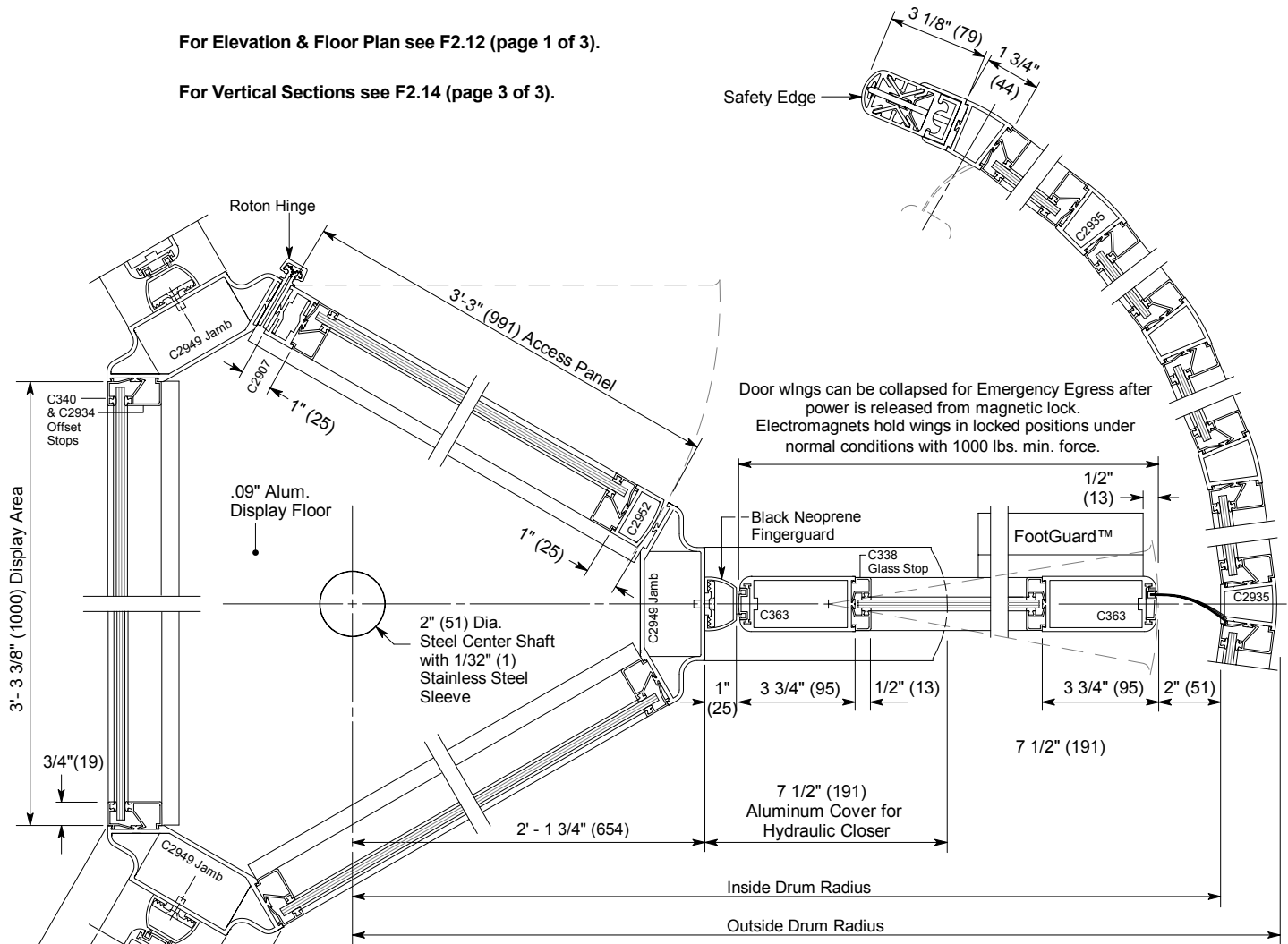
For Horizontal Sections see F2.13 (page 2 of 3).

For Vertical Sections see F2.14 (page 3 of 3).

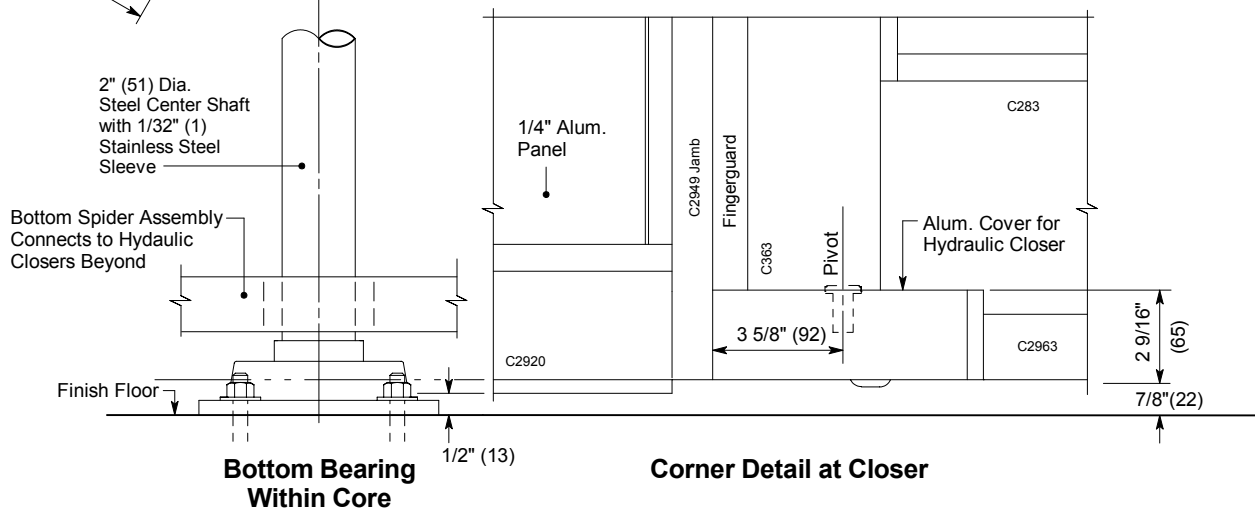
Floor Plan and Exterior Elevation

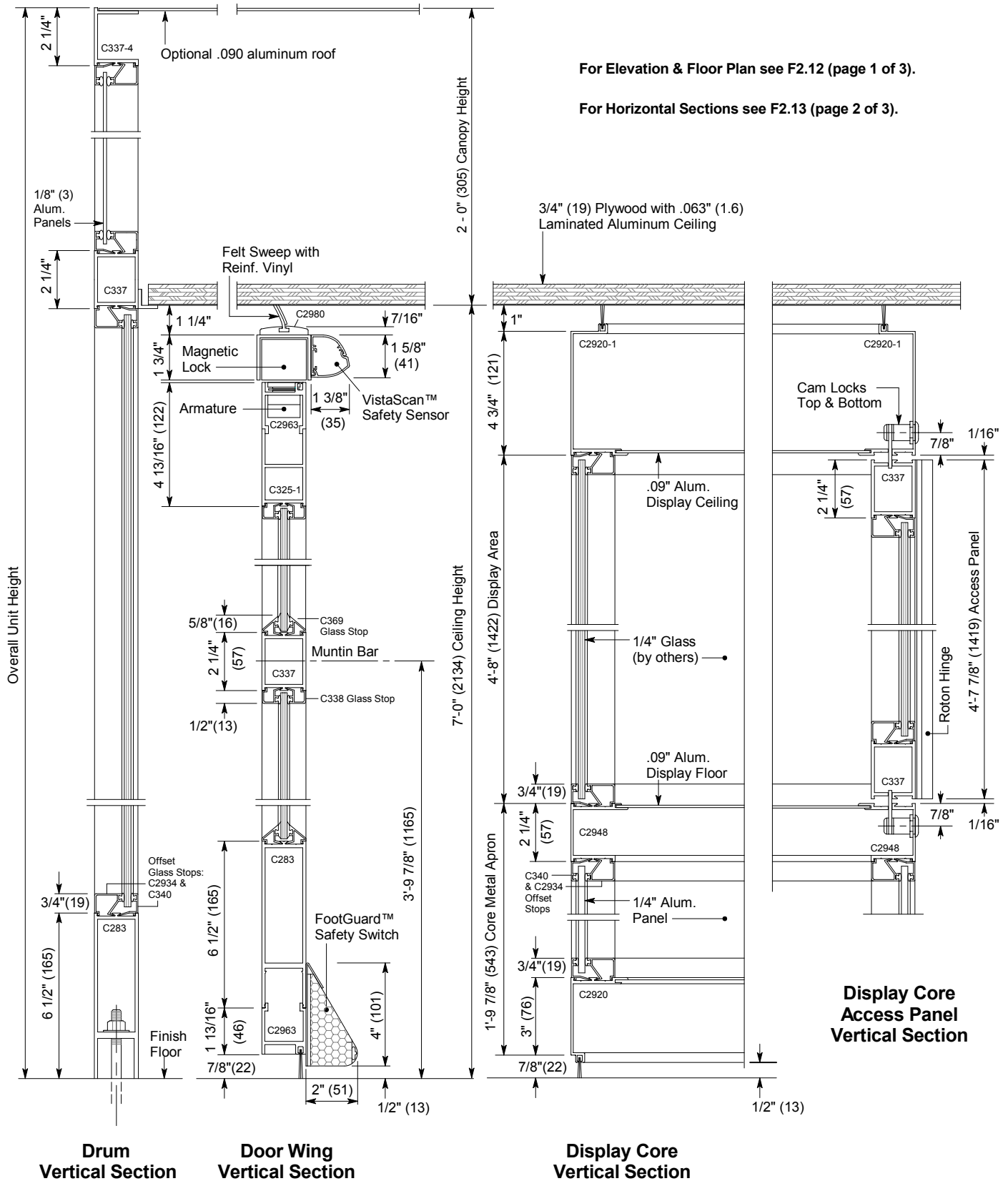
For Elevation & Floor Plan see F2.12 (page 1 of 3).

For Vertical Sections see F2.14 (page 3 of 3).



Display Core, Door Wing and Drum - Horizontal Section





Horton Automatics reserves the right to alter its product and specifications without notice. Dimensions given in U.S. inches followed by millimeters in parenthesis.



® 4242 Baldwin Boulevard
 Corpus Christi, Texas
 USA 78405-3399
 Tel: 800-531-3111, 361-888-5591
 Fax: 800-531-3108, 361-888-6510
 www.hortondoors.com
 The Automatic Choice

ARCHITECTURAL DETAILS

REVOLVING DOORS

Grand® Automatic Series 9630

Type: 3-Wing with Round Drum (page 1 of 3)

F2.15

July 10

Standard Packages

Nominal Outside Diameter	Inside Diameter	Entry	Clear Access at Door Wing	Overall Unit Height	Rough Opening Width	Rough Opening Height
12'-0" (3658)	11'-8 1/2" (3569)	5'-1 5/8" (1565)	3'- 0 1/4" (921)	9'- 0" (2438)	12'-0 1/2" (3670)	9'-0 1/4" (2750)
14'-0" (4267)	13'-8 1/2" (4173)	6'-1 5/8" (1870)	4'- 0 1/4" (1226)	9'- 0" (2438)	14'-0 1/2" (4280)	9'-0 1/4" (2750)
16'-0" (4877)	15'-8 1/2" (4788)	7'-1 5/8" (2174)	5'- 0 1/4" (1530)	9'- 0" (2438)	16'-0 1/2" (4890)	9'-0 1/4" (2750)

Canopy Outside Diameter = Nominal O.D. + 1/2" (13).

Ceiling Height: 7'- 0" (2134).

Glazing: Standard wing prep'd for 1/4" (6) glass. Glass provided by others. Standard drum provided with 7/16" clear laminated curved glass.

Anodized Finish:
Clear or Dark Bronze

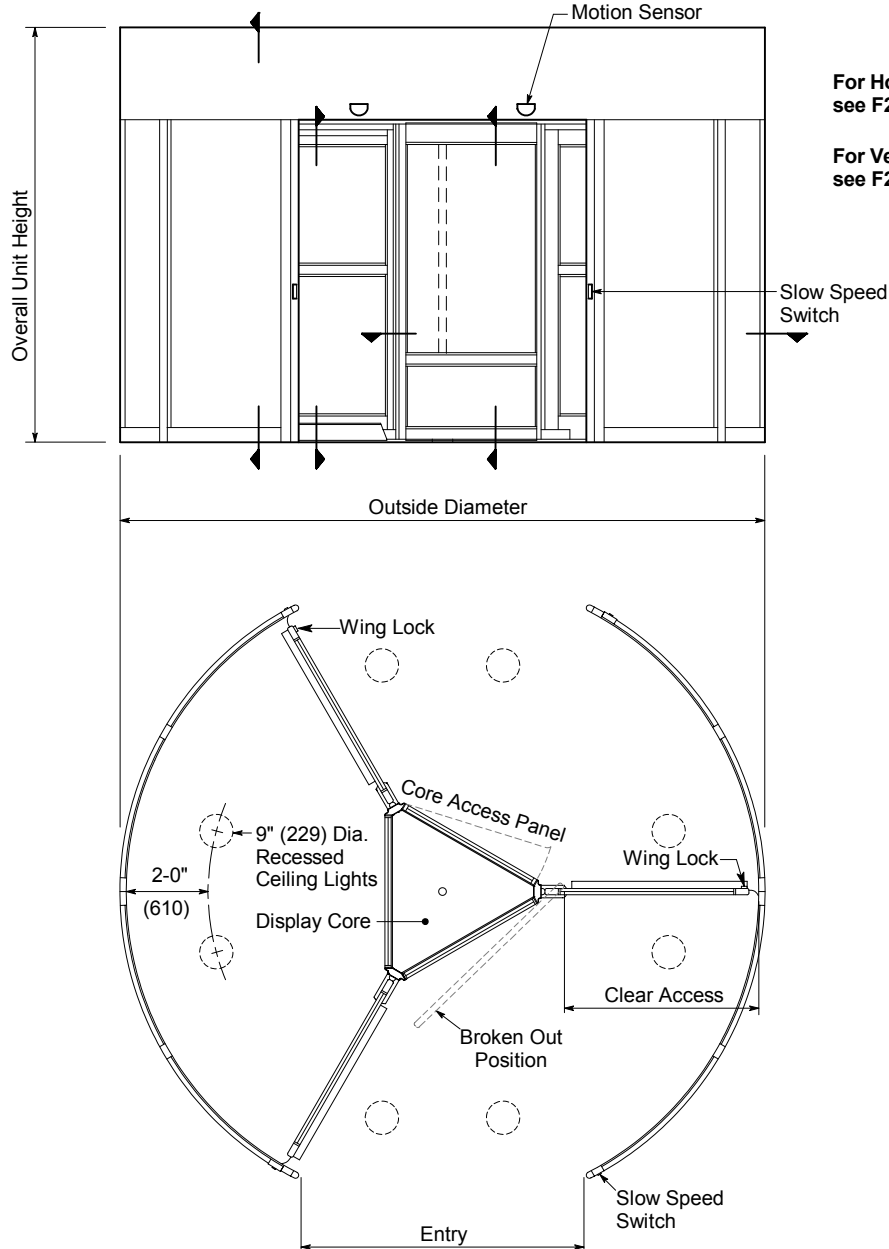
Options

- Custom ceiling height up to 8'-0".
- Extended or cropped canopy.
- Aluminum roof.
- Prep up to 1" glazing in door wings & 9/16" in drum.
- Custom anodized or paint finish.

For more standards & options see Architectural Specs (p.F7.0) and Spec Details (p. F3.0).

Installation and Operation

- Door unit is surface mounted to finish floor (floor not to exceed 1/4" out of level). Unit is free-standing with no additional support required.
- Drum can be center connected to adjacent construction or throat connected (at entry vertical rails) (see p.F1.1). Allow 1/4" shim space each side & at canopy. Adjacent construction not to bear down on revolving door.
- Motion sensors at each entry starts wing rotation on user approach at 3-5 RPM. Push plates mounted at each side of entry slow door to 1-3 RPM for slower traffic.
- Electrical: Provide 120 VAC, 15 amp service on a dedicated 20 amp circuit breaker routed to power operator mounted within the enclosure canopy.



For Horizontal Sections see F2.16 (page 2 of 3).

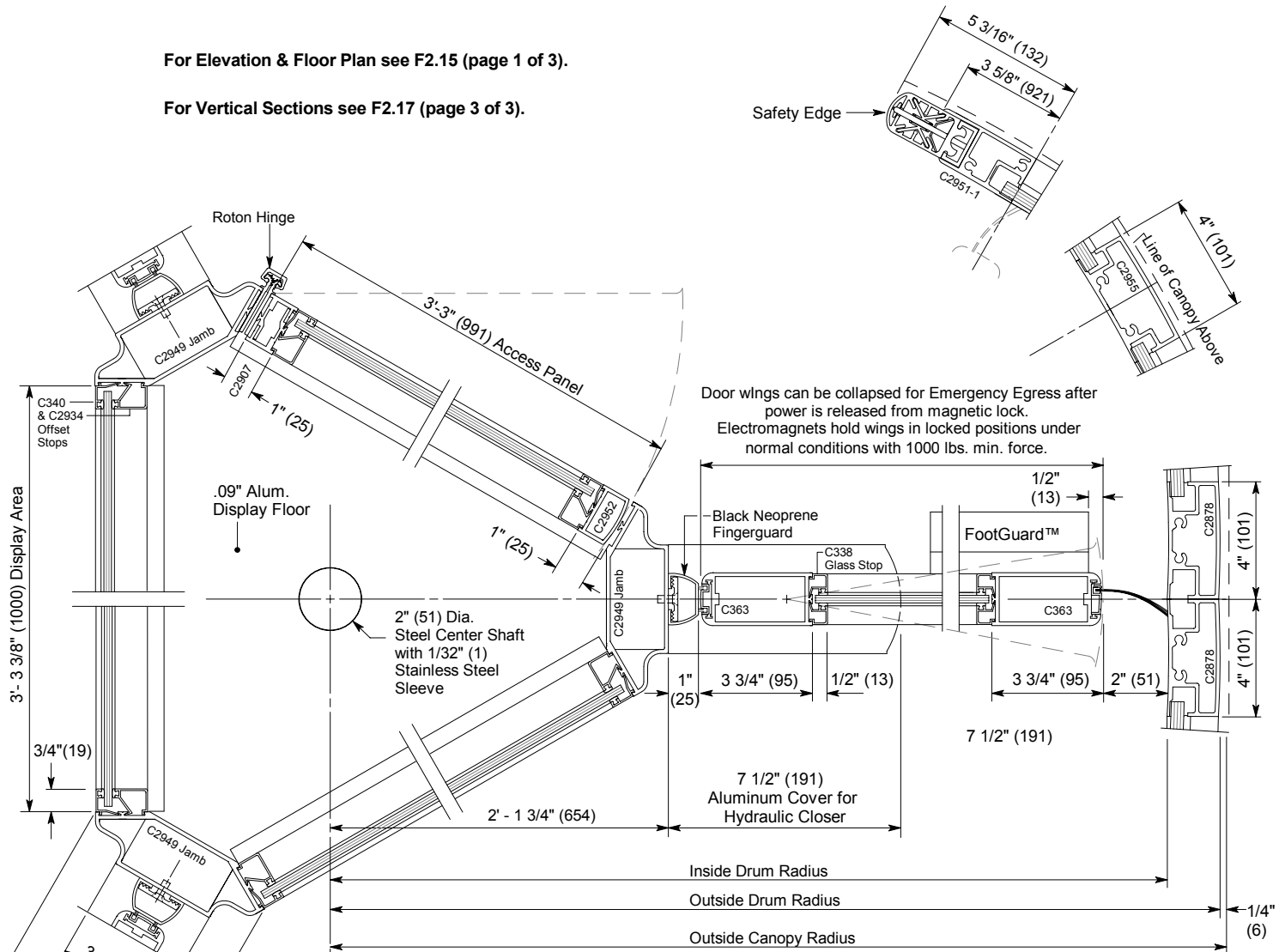
For Vertical Sections see F2.17 (page 3 of 3).

Floor Plan and Exterior Elevation

Horton Automatics reserves the right to alter its product and specifications without notice. Dimensions given in U.S. inches followed by millimeters in parenthesis.

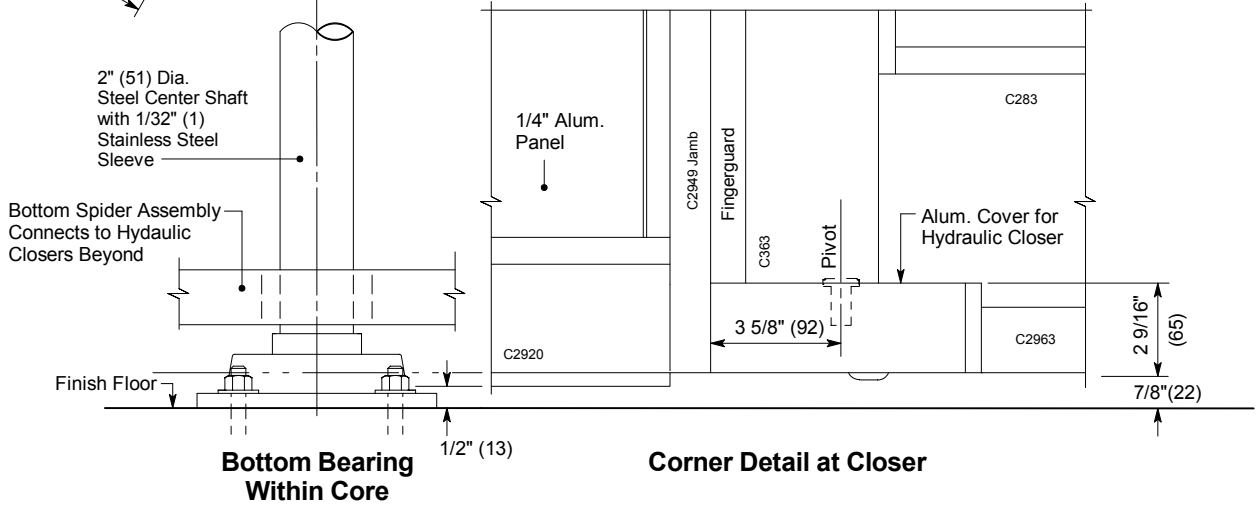
For Elevation & Floor Plan see F2.15 (page 1 of 3).

For Vertical Sections see F2.17 (page 3 of 3).



Door wings can be collapsed for Emergency Egress after power is released from magnetic lock. Electromagnets hold wings in locked positions under normal conditions with 1000 lbs. min. force.

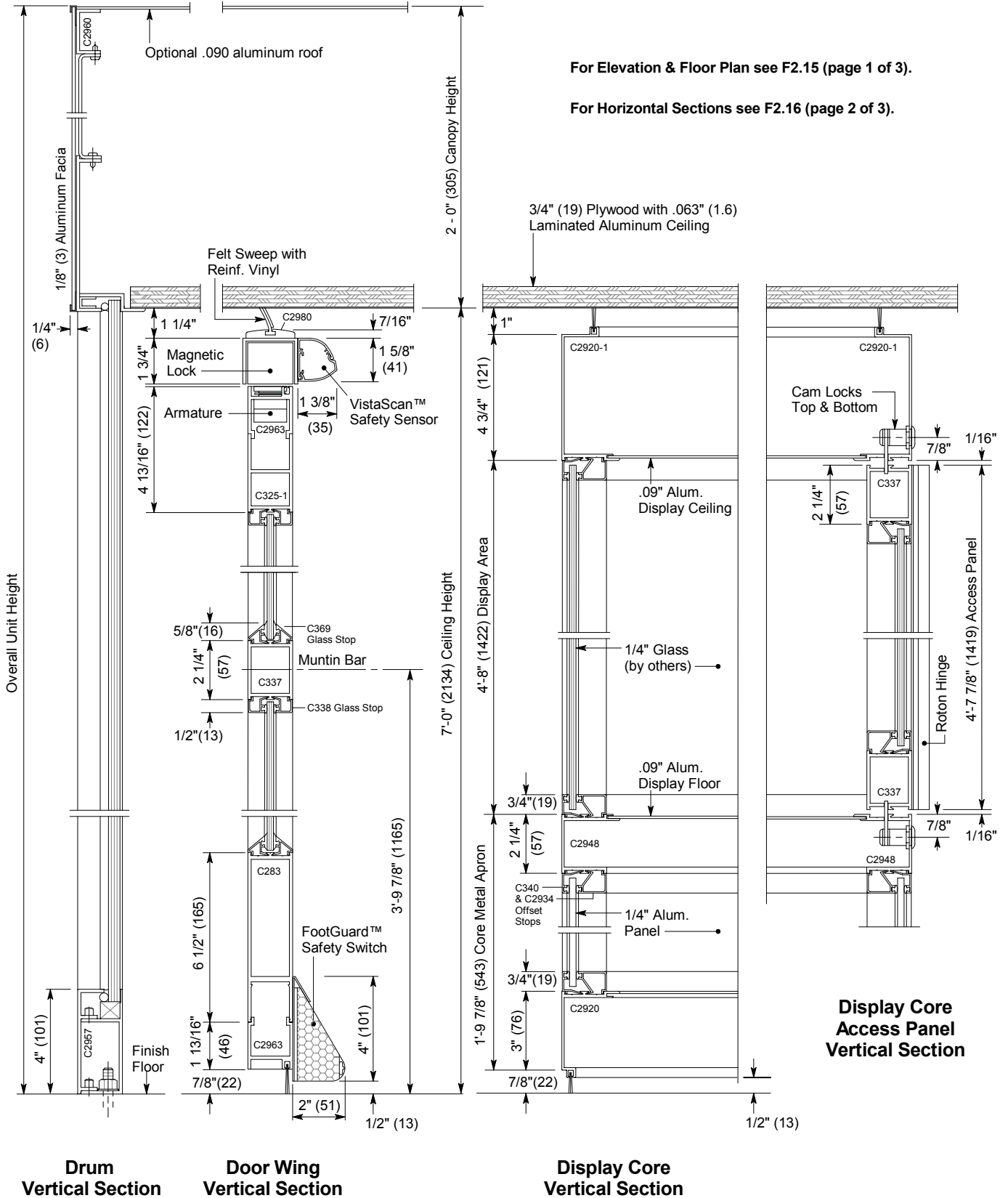
Display Core, Door Wing and Drum - Horizontal Section



Bottom Bearing Within Core

Corner Detail at Closer

Horton Automatics reserves the right to alter its product and specifications without notice. Dimensions given in U.S. inches followed by millimeters in parenthesis.



Horton Automatics reserves the right to alter its product and specifications without notice. Dimensions given in U.S. inches followed by millimeters in parenthesis.



4242 Baldwin Boulevard
 Corpus Christi, Texas
 USA 78405-3399
 Tel: 800-531-3111, 361-888-5591
 Fax: 800-531-3108, 361-888-6510
 www.hortondoors.com
 The Automatic Choice

ARCHITECTURAL DETAILS

REVOLVING DOOR ENTRANCES

Grand® Automatic Series 9620

Type: 2-Wing with Round Drum

F2.18

Apr 13

Standard Packages

Nominal Outside Diameter	Inside Diameter	Entry / Breakout Opening	Slide Door Opening	Rough Opening Width
12'-1 3/16" (3688)	11'-9 3/4" (3600)	5'-10 7/8" (1800)	3'-7 5/16" (1100)	12'-1 3/4" (3670)
14'-0 13/16" (4288)	13'-9 1/4" (4200)	6'-10 11/16" (2100)	4'-7 1/16" (1400)	14'-1 3/8" (4280)
16'-0 7/16" (4888)	15' - 9" (4800)	7'-10 1/2" (2400)	5'-6 15/16" (1700)	16'-1" (4890)

Ceiling Height: 7'-6 9/16" (2300)
Canopy Height: 1'-1 3/8" (340)
Overall Unit Height: 8'-7 15/16" (2640)

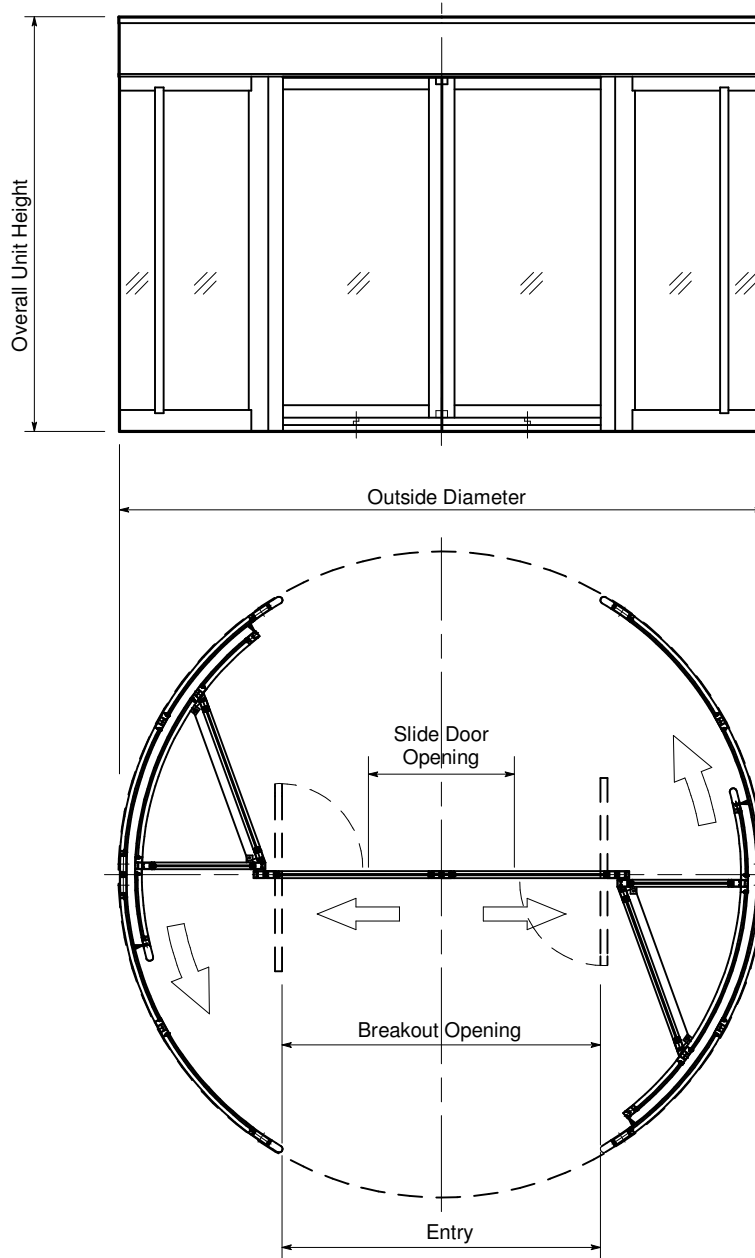
Glazing: Prep for 1/4" glazing in door wings & 5/16" in drum.
Finishes: Anodized or paint finish or stainless steel cladding

Options

- Extended canopy.
- Aluminum roof.

Installation and Operation

- Door unit is surface mounted to finish floor (floor not to exceed 1/4" out of level). Unit is free-standing with no additional support required.
- Drum can be center connected to adjacent construction. Allow 1/4" shim space each side & at canopy. Adjacent construction not to bear down on revolving door.
- Motion sensors at each entry starts wing rotation on user approach at 3-5 RPM. Push plates mounted at each side of entry slow door to 1-3 RPM for slower traffic.
- Electrical: Provide 120 VAC, 15 amp service on a dedicated 20 amp circuit breaker routed to power operator mounted within the enclosure canopy.



Floor Plan and Exterior Elevation

Horton Automatics reserves the right to alter its product and specifications without notice. Dimensions given in U.S. inches followed by millimeters in parenthesis.