



® 4242 Baldwin Boulevard
 Corpus Christi, Texas
 USA 78405-3399
 Tel: 800-531-3111, 361-888-5591
 Fax: 800-531-3108, 361-888-6510
 www.hortondoors.com
 The Automatic Choice

ARCHITECTURAL DETAILS

POWER SWING DOOR OPERATORS

HD-Swing® Series 4100-IG

In Ground Operator - Single & Pair, Inswing & Outswing

B2.9

Aug 12

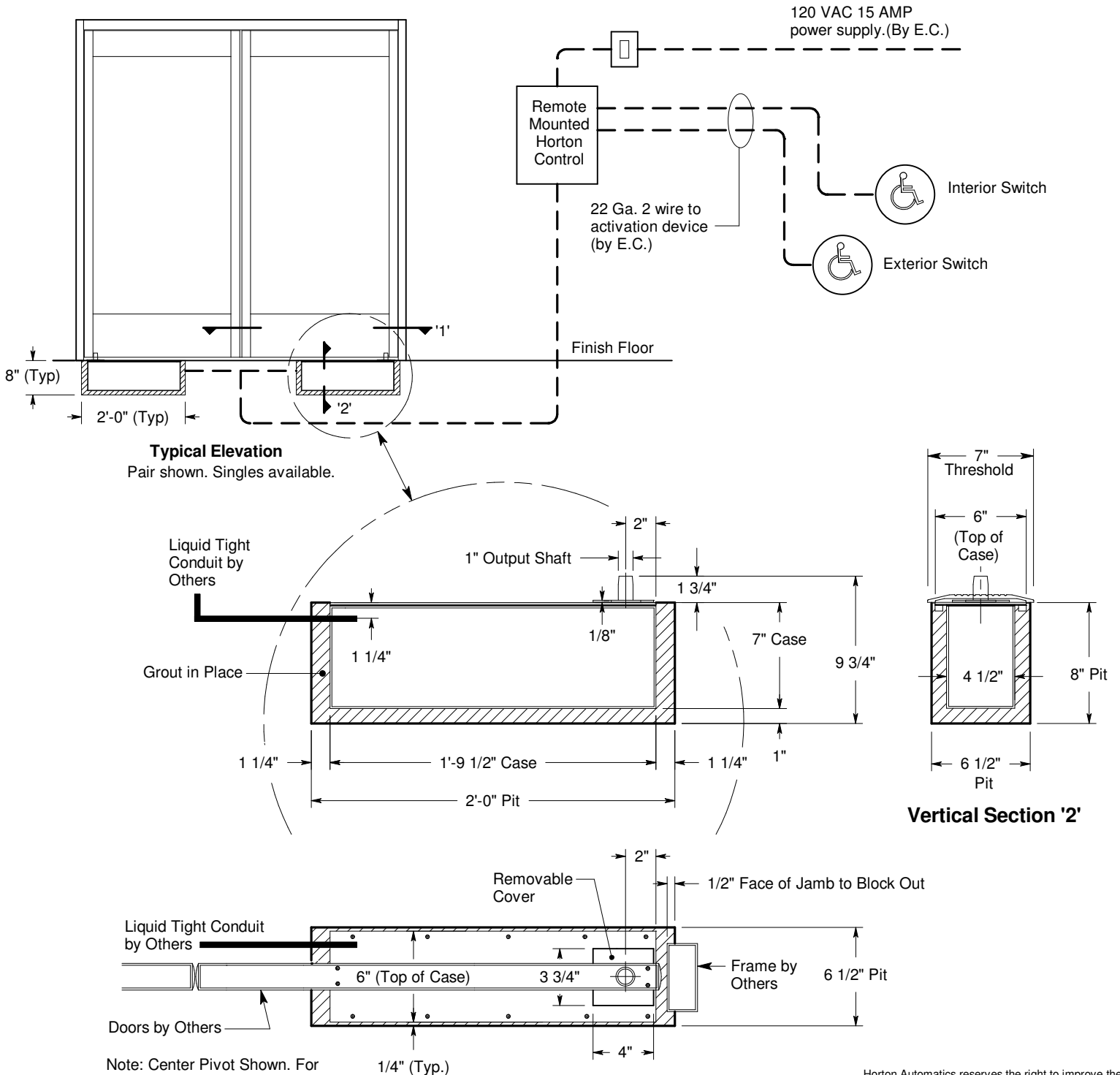
Installation and Operation

- Operator to be isolation mounted and concealed in a stainless steel case in the floor of the existing door frame or wall. Door Arms to be furnished specific to the door mounting hardware. Frame and door panel to be provided by others.
- Electrical: Provide 120 VAC , 60 cycle, single phase, 15 amp service (in conduit) to each swing door unit on a dedicated 20 amp circuit breaker routed into operator. Provide liquid tight connection, conduit and wiring. Maximum operator current draw is 3.15 amps
- Unit to be actuated by push button or push plate (see p.B1.4).

Door Requirements

- Door Weight - Maximum 250 lbs
- Door Width - Minimum. 25
- Hinge - Butt Hung, Center Pivot or Offset Pivot

For additional equipment information see Architectural Specifications starting on p. B8.1.



Note: Center Pivot Shown. For Off-set Pivot Configuration Consult Factory.

Horton Automatics reserves the right to improve the product and change its specifications without notice. Dimensions given in U.S. inches followed by millimeters in parenthesis.