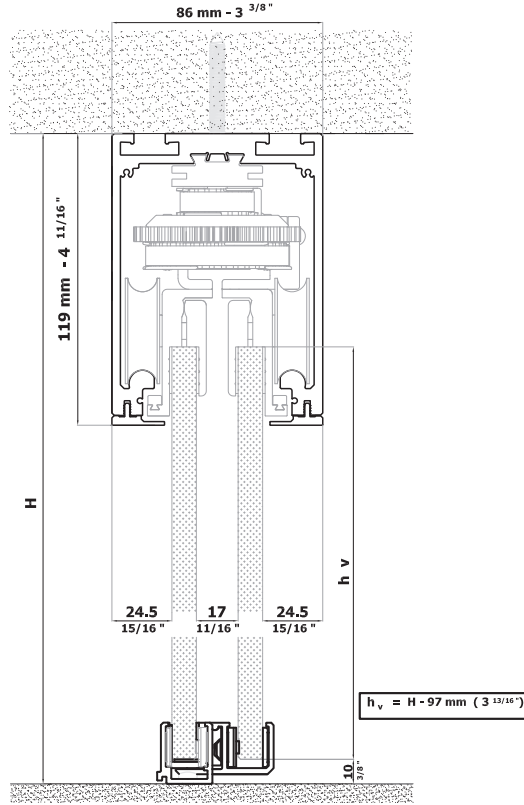


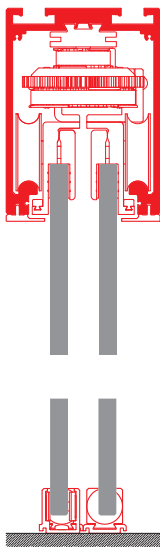
X = 3 3/8"  
Y = 4 1/2"

	Width (clearance)	MIN	MAX	OVERLAP
2 sliding leaves		4' 1 3/16"	8' 4 3/8"	1 15/16"
3 sliding leaves*		5' 7 15/16"	9' 1 1/4"	1 15/16"
4 sliding leaves*		7' 10 1/2"	10' 2 1/16"	3 15/16"
2+2 sliding leaves		8' 2 7/16"	16' 8 13/16"	3 15/16"

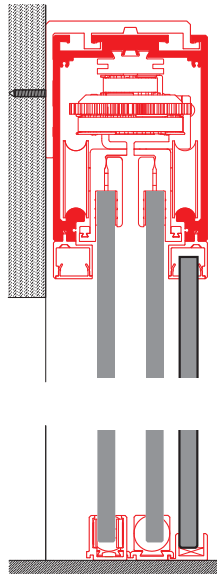
\*SPECIAL ORDER REQUEST



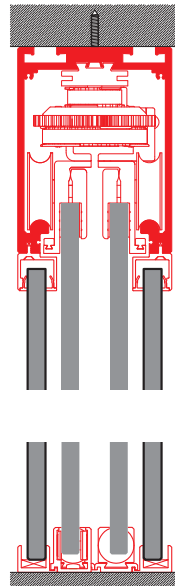
Basic



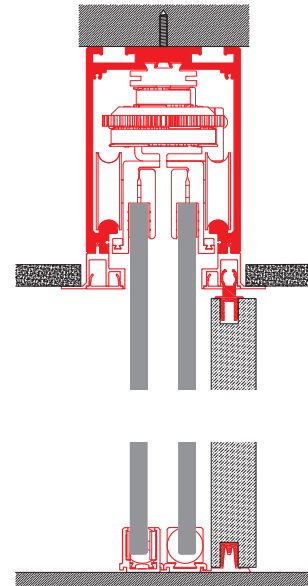
Wall



Ceiling



Dropped ceiling



SLIDING GLASS    FIXED GLASS    FIXED UNIT    WALL    CEILING    DROPPED CEILING    FLOOR

**KLEIN USA, Inc.®**

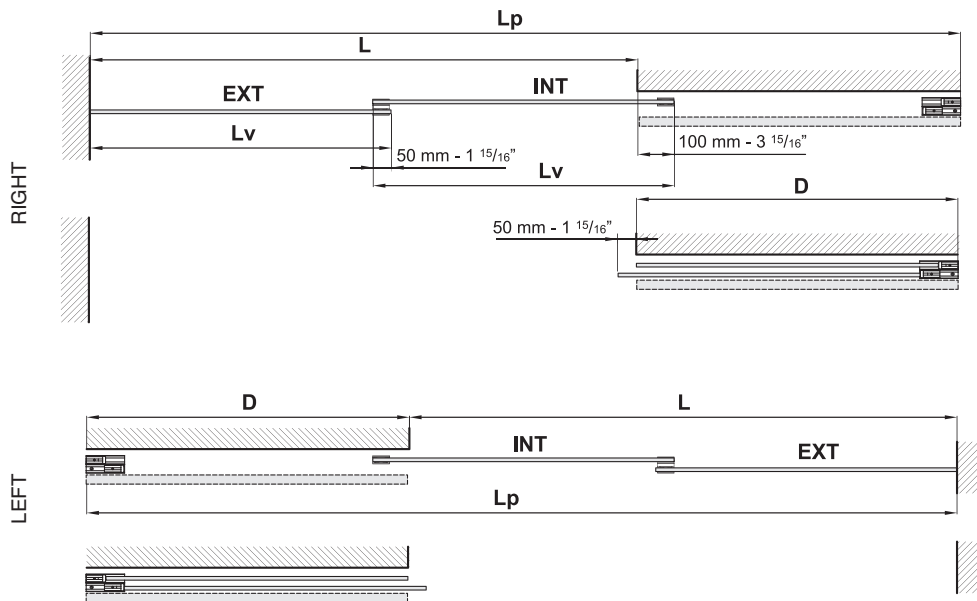
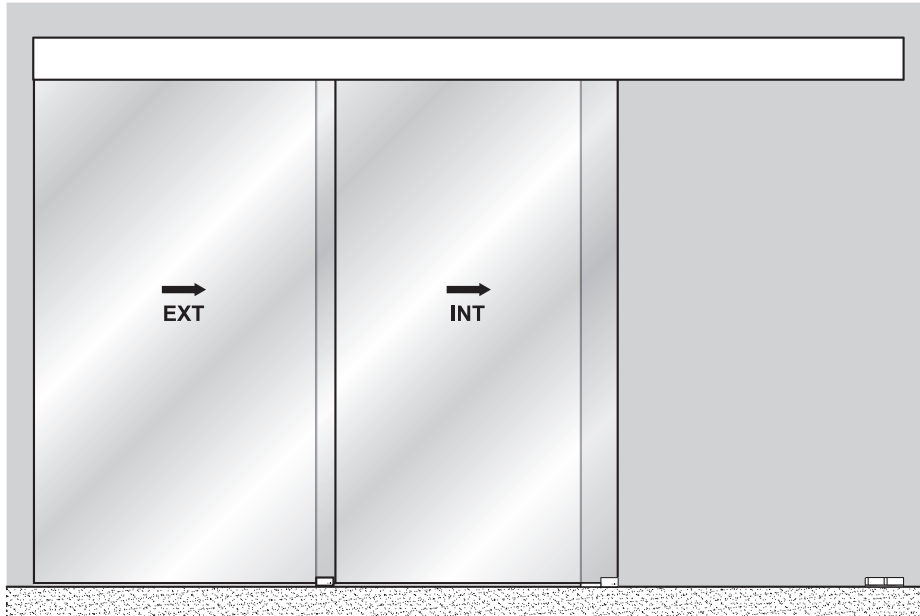
Customer Phone: (+34) 902 199 822

Customer Fax: (+34) 902 199 667

[www.klein-usa.com](http://www.klein-usa.com)

**Extendo**

EXTENDO 2 DOORS/ EXTENDO 2 PUERTAS

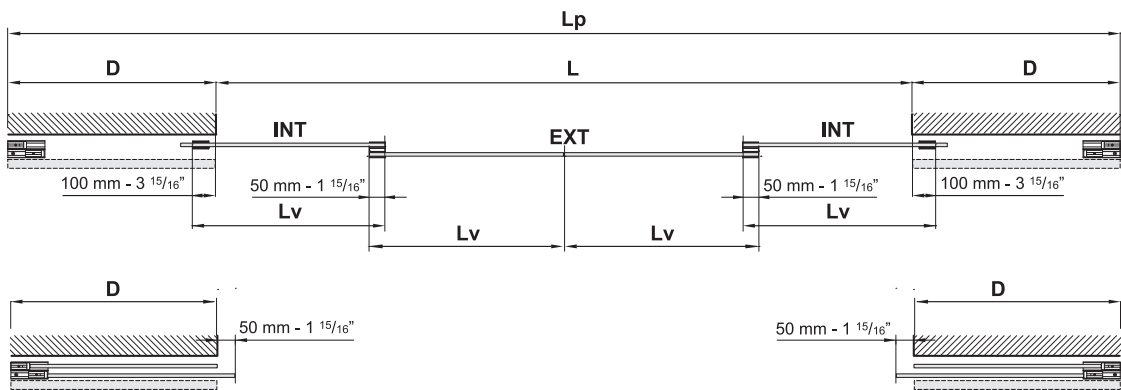


L	Lv	Pf	hv
1.250-1.550 mm (4' 1 <sup>3</sup> / <sub>16</sub> " - 5' 1")	675-850 mm (2' 2 <sup>9</sup> / <sub>16</sub> " - 2' 9 <sup>7</sup> / <sub>16</sub> ")	2.500 mm (8' 2 <sup>7</sup> / <sub>16</sub> ")	≤ 3.000 mm (9' 10 <sup>1</sup> / <sub>8</sub> ")
1.550-1.900 mm (5' 1" - 6' 2 <sup>13</sup> / <sub>16</sub> ")	850-1.025 mm (2' 9 <sup>7</sup> / <sub>16</sub> " - 3' 4 <sup>3</sup> / <sub>8</sub> ")	3.000 mm (9' 10 <sup>1</sup> / <sub>8</sub> ")	≤ 3.000 mm (9' 10 <sup>1</sup> / <sub>8</sub> ")
1.900-2.200 mm (6' 2 <sup>13</sup> / <sub>16</sub> " - 7' 2 <sup>5</sup> / <sub>8</sub> ")	1.025-1.175 mm (3' 4 <sup>3</sup> / <sub>8</sub> " - 3' 10 <sup>1</sup> / <sub>4</sub> ")	3.500 mm (11' 5 <sup>13</sup> / <sub>16</sub> ")	≤ 3.000 mm (9' 10 <sup>1</sup> / <sub>8</sub> ")
2.200-2.550 mm (7' 2 <sup>5</sup> / <sub>8</sub> " - 8' 4 <sup>3</sup> / <sub>8</sub> ")	1.175-1.350 mm (3' 10 <sup>1</sup> / <sub>4</sub> " - 4' 5 <sup>1</sup> / <sub>8</sub> ")	4.000 mm (13' 1 <sup>1</sup> / <sub>2</sub> ")	≤ 2.500 mm (8' 2 <sup>7</sup> / <sub>16</sub> ")

L = _____	$D \geq \frac{L}{2} + 125 \text{ mm (1 } \frac{9}{16} \text{")}$	$L_p = L + D \quad L_p \leq P_f$	$L_v = \frac{L}{2} + 75 \text{ mm (2 } \frac{15}{16} \text{")}$
-----------	--	----------------------------------	---

KLEIN USA, Inc has the right to change the sizes and/or the product in any moment without previous notice.

EXTENDO 2+2 DOORS/ EXTENDO 2+2 PUERTAS



L	Lv	Pf	hv
2.500-3.100 mm (8' 27/16" - 10' 21/16")	675-850 mm (2' 29/16" - 2' 97/16")	2.500 mm (8' 27/16") x2	≤ 3.000 mm (9' 101/8")
3.100-3.800 mm (10' 21/16" - 12' 59/8")	850-1.025 mm (2' 97/16" - 3' 43/8")	3.000 mm (9' 101/8") x2	≤ 3.000 mm (9' 101/8")
3.800-4.400 mm (12' 59/8" - 14' 51/4")	1.025-1.175 mm (3' 43/8" - 3' 101/4")	3.500 mm (11' 513/16") x2	≤ 3.000 mm (9' 101/8")
4.400-5.100 mm (14' 51/4" - 16' 813/16")	1.175-1.350 mm (3' 101/4" - 4' 51/8")	4.000 mm (13' 11/2") x2	≤ 2.500 mm (8' 27/16")

L = _____	$D \geq \frac{L}{4} + 125 \text{ mm (1' 9/16")}$	$L_p = D \times 2 + L$ $L_p \leq P_f$	$L_v = \frac{L}{4} + 75 \text{ mm (2' 15/16")}$
-----------	--	---------------------------------------	---

KLEIN USA, Inc has the right to change the sizes and/or the product in any moment without previous notice.